



ЛЕВАДА-ЦЕНТР

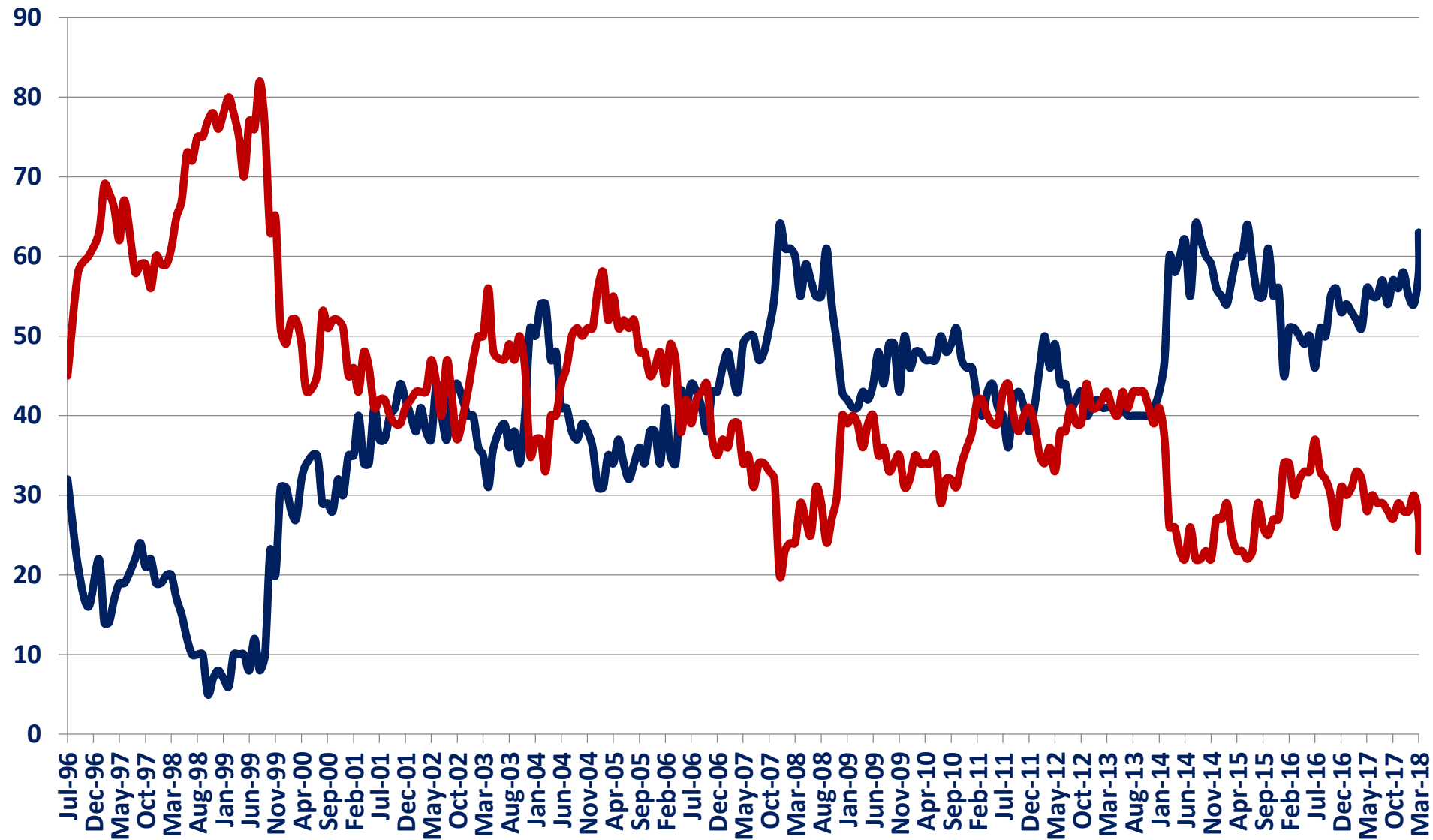
АНАЛИТИЧЕСКИЙ ЦЕНТР ЮРИЯ ЛЕВАДЫ

PRESIDENTIAL ELECTIONS IN RUSSIA, MARCH 2018



RIGHT vs WRONG DIRECTION

— IN THE RIGHT DIRECTION — ON THE WRONG TRACK

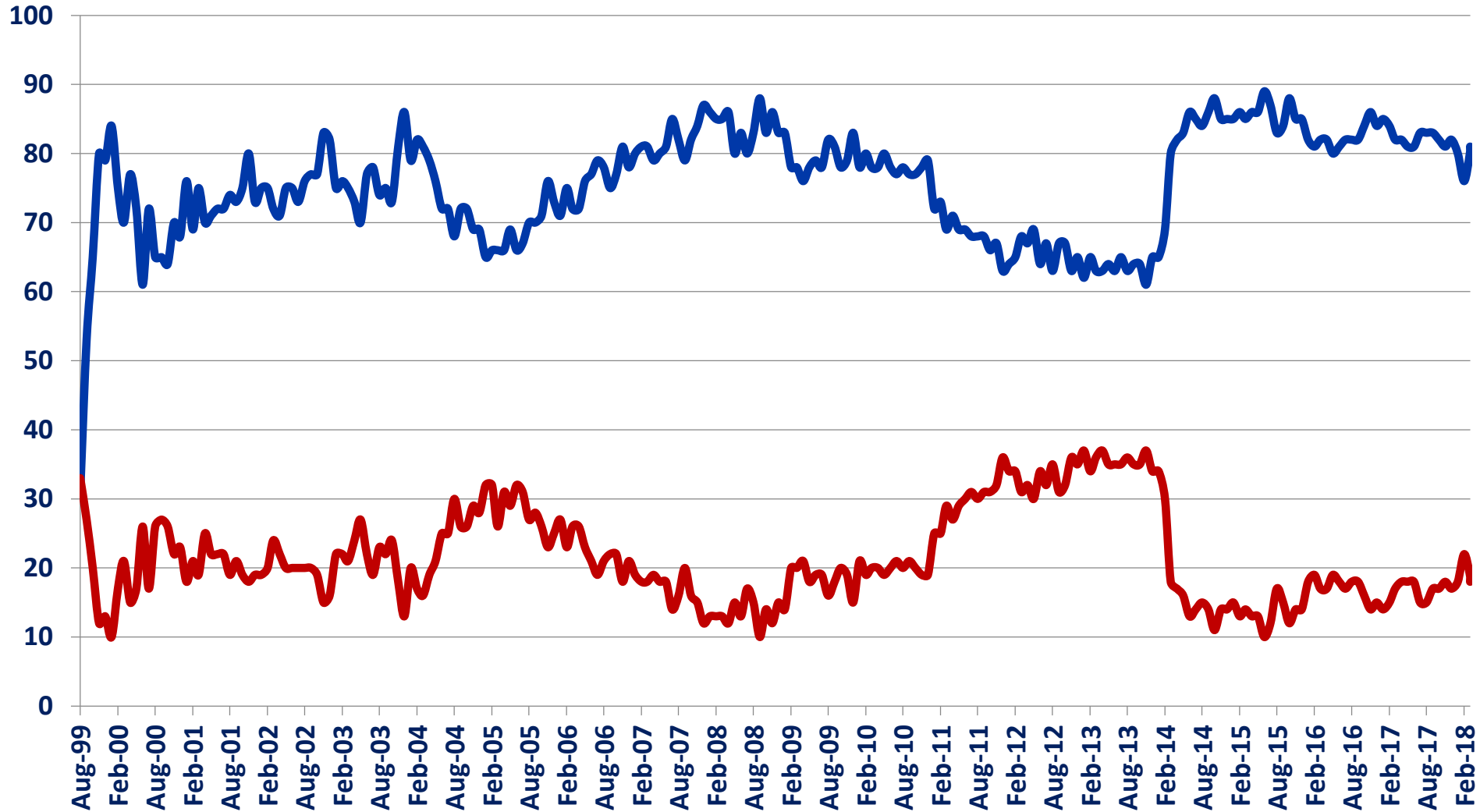




APPROVAL OF PUTIN

Do you approve the activities of V. Putin as the President (Prime Minister) of Russia?

— APPROVE — DISAPPROVE

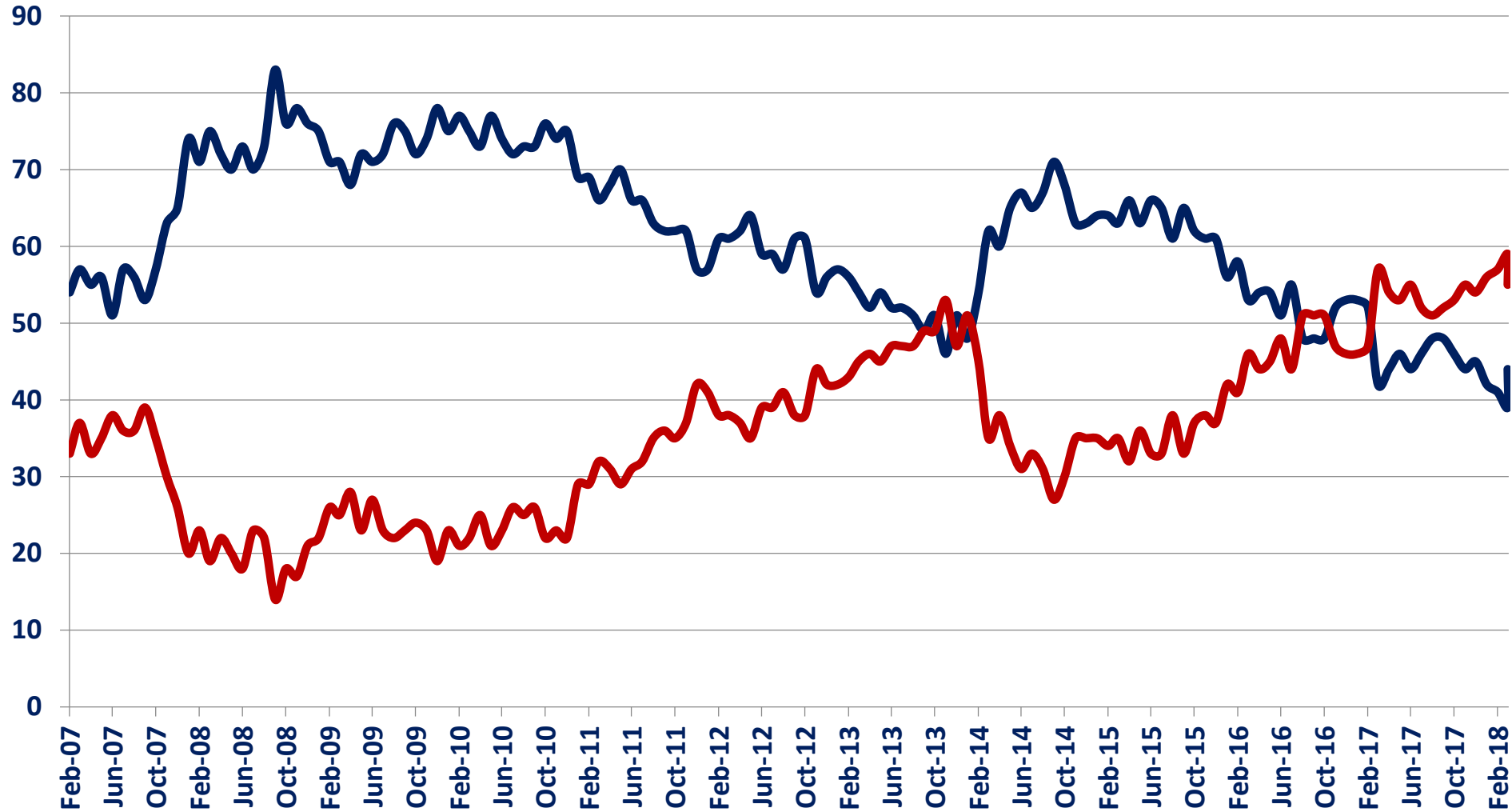




APPROVAL OF MEDVEDEV

Do you approve the activities of D. Medvedev as Prime Minister (the President) of Russia?

— APPROVE — DISAPPROVE

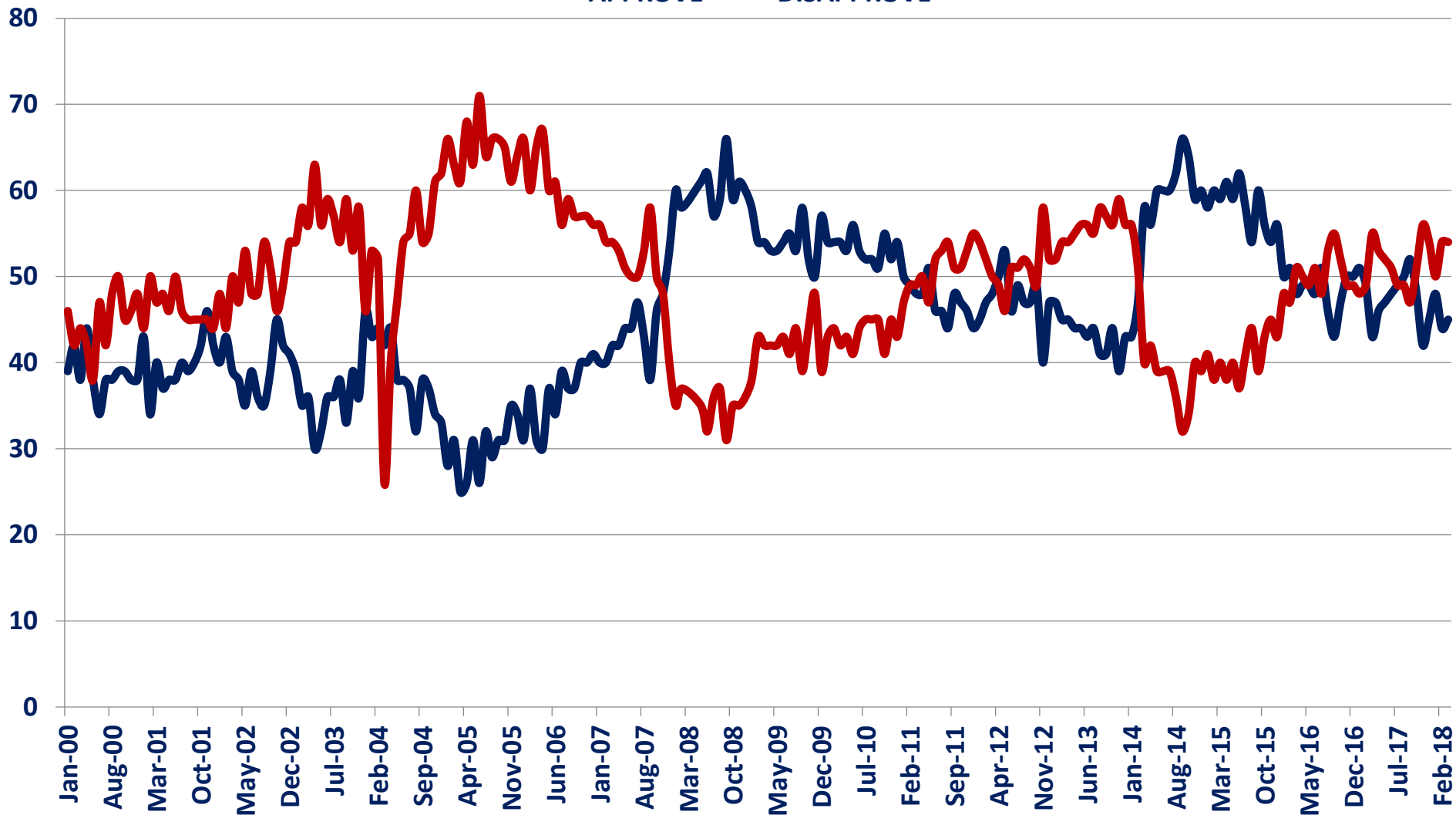




APPROVAL OF THE GOVERNMENT

«Do you approve the activities of the Russian Government?»

— APPROVE — DISAPPROVE

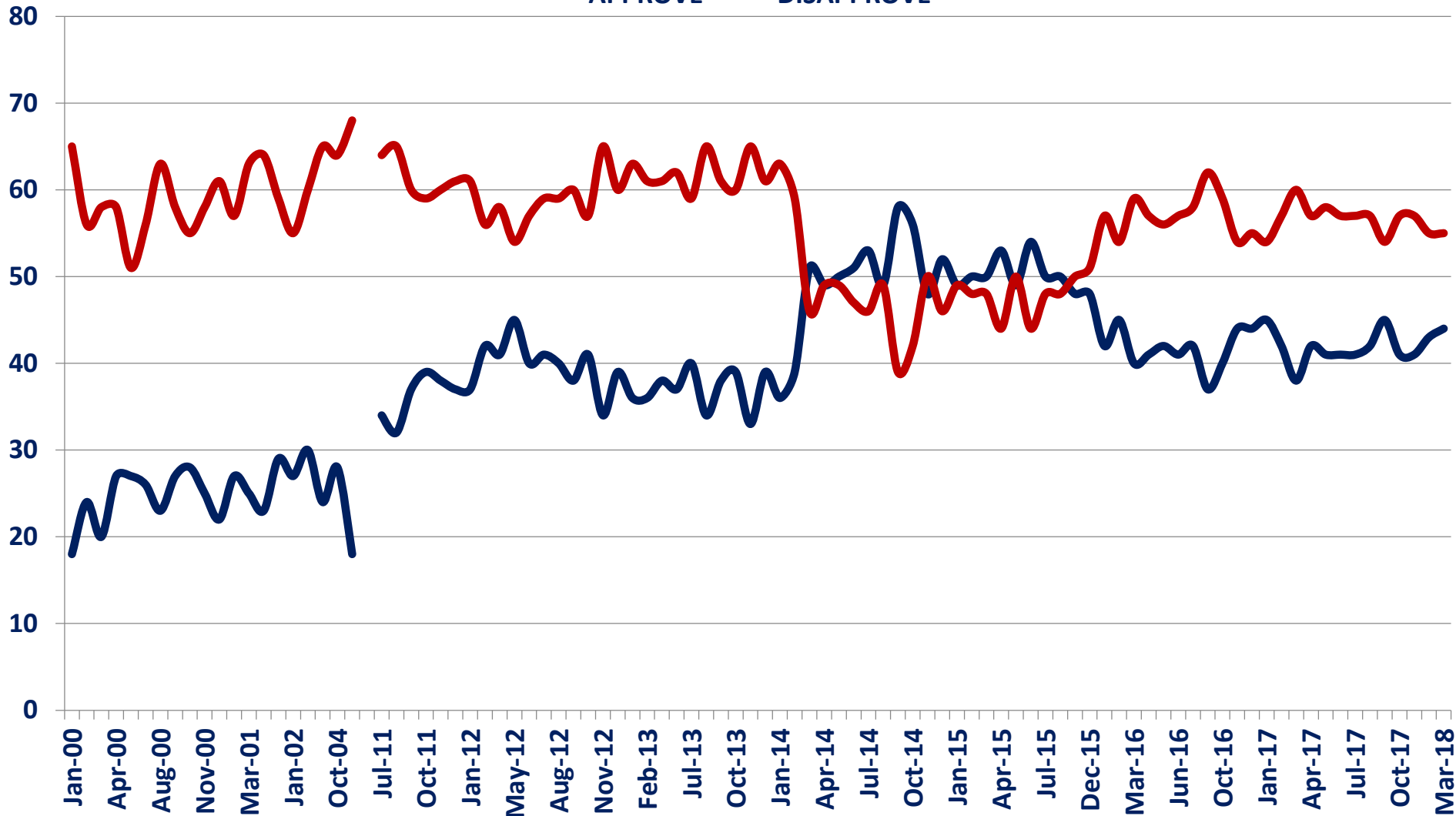




APPROVAL OF THE STATE DUMA

«Do you approve the activities of the State Duma?»

— APPROVE — DISAPPROVE



THE BALANCE OF ACHIEVEMENTS AND FAILURES OF V. PUTIN

(the difference between positive and negative answers)

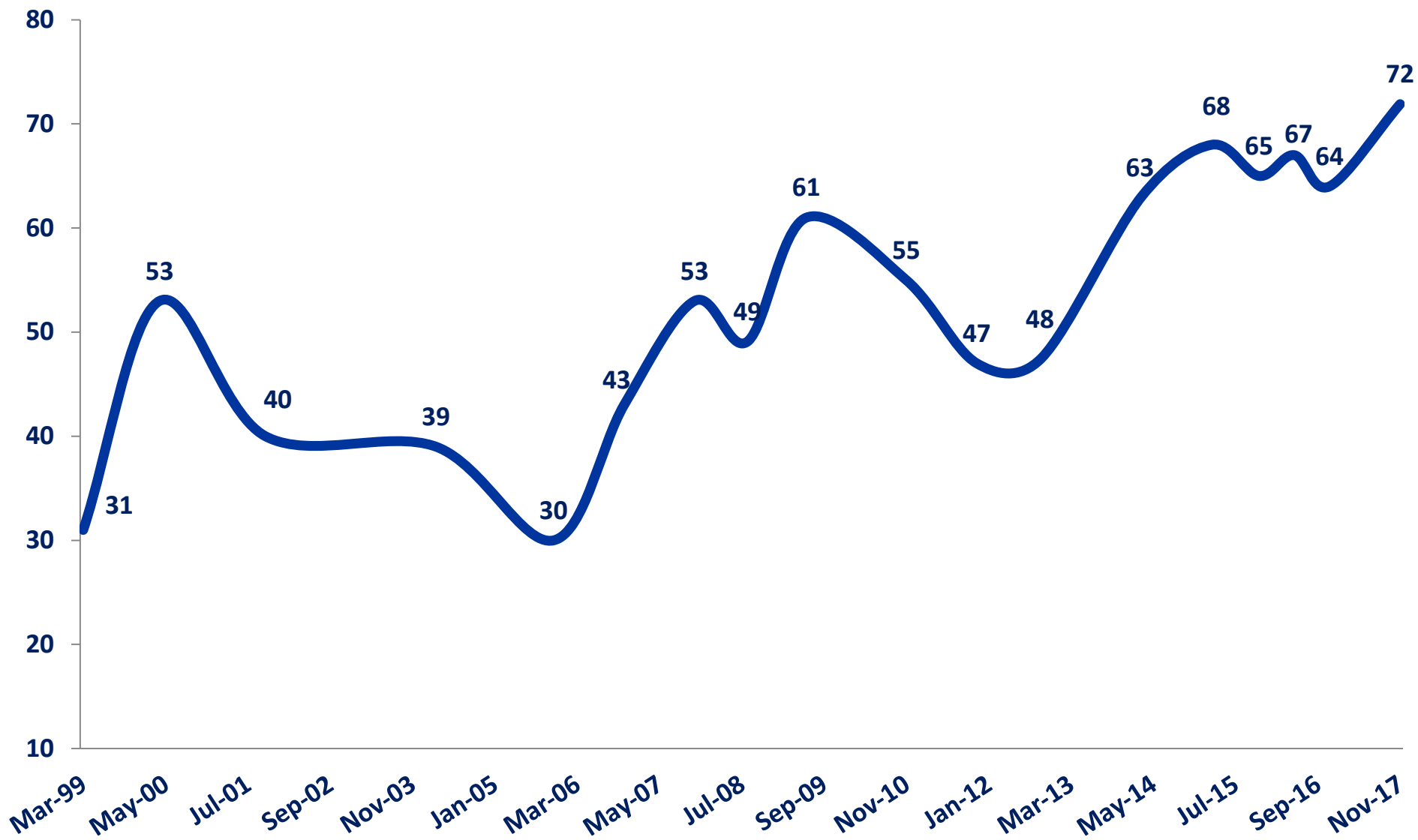
«WHAT WOULD YOU CALL V. PUTIN'S MAIN ACHIEVEMENT DURING HIS TERM IN OFFICE? »

«WHAT WOULD YOU CALL V. PUTIN'S BIGGEST FAILURE DURING HIS TERM IN OFFICE? »

| | Aug-10 | Feb-13 | Mar-14 | Mar-15 |
|--|--------|--------|--------|--------|
| STRENGTHENING RUSSIA'S POSITION IN THE WORLD | 23 | 16 | 42 | 36 |
| SOLVING THE CHECHEN PROBLEM | -10 | -5 | 14 | 29 |
| OVERCOMING THE SEPARATIST SENTIMENTS, PREVENTING RUSSIA'S DESINTAGRATION | - | 16 | 22 | 27 |
| COPE WITH THE CONSEQUENCES OF THE 2008 ECONOMIC CRISIS | - | 9 | 14 | 23 |
| KEEPING RUSSIA ON THE PATH OF REFORMS | 16 | 14 | 11 | 20 |
| IMPROVEMENT OF THE LIVING STANDARTS, SALARIES AND PENSIONS | 32 | 5 | 2 | 14 |
| COUNTINUATION OF REFORMS BUT WITH GREATER REGARD OF SOCIAL NEEDS | 12 | -7 | -2 | 0 |
| COOPERATION WITH OTHER CIS COUNTRIES | 10 | 6 | 3 | 6 |
| INTRODUCONG OF ORDER, MAINTAINING A CALM POLITICAL SITUATION | 2 | -14 | -15 | -4 |
| OVERCOMING OF THE ECONOMIC CRISIS | -6 | -8 | -12 | -13 |
| COMPENSATING THE MONEY LOST IN THE COURSE OF REFORMS | -15 | -21 | -28 | -29 |
| ENSURING OF JUST DISTRIBUTION OF INCOME IN ACCORDANCE WITH THE PEOPLE'S INTERESTS | -26 | -40 | -33 | -35 |
| NONE OF THE ABOVE | 2 | 5 | 2 | 1 |
| DIFFICULT TO ANSWER | 5/13 | 8/8 | 10/15 | 6/16 |



RUSSIA IS A GREAT POWER



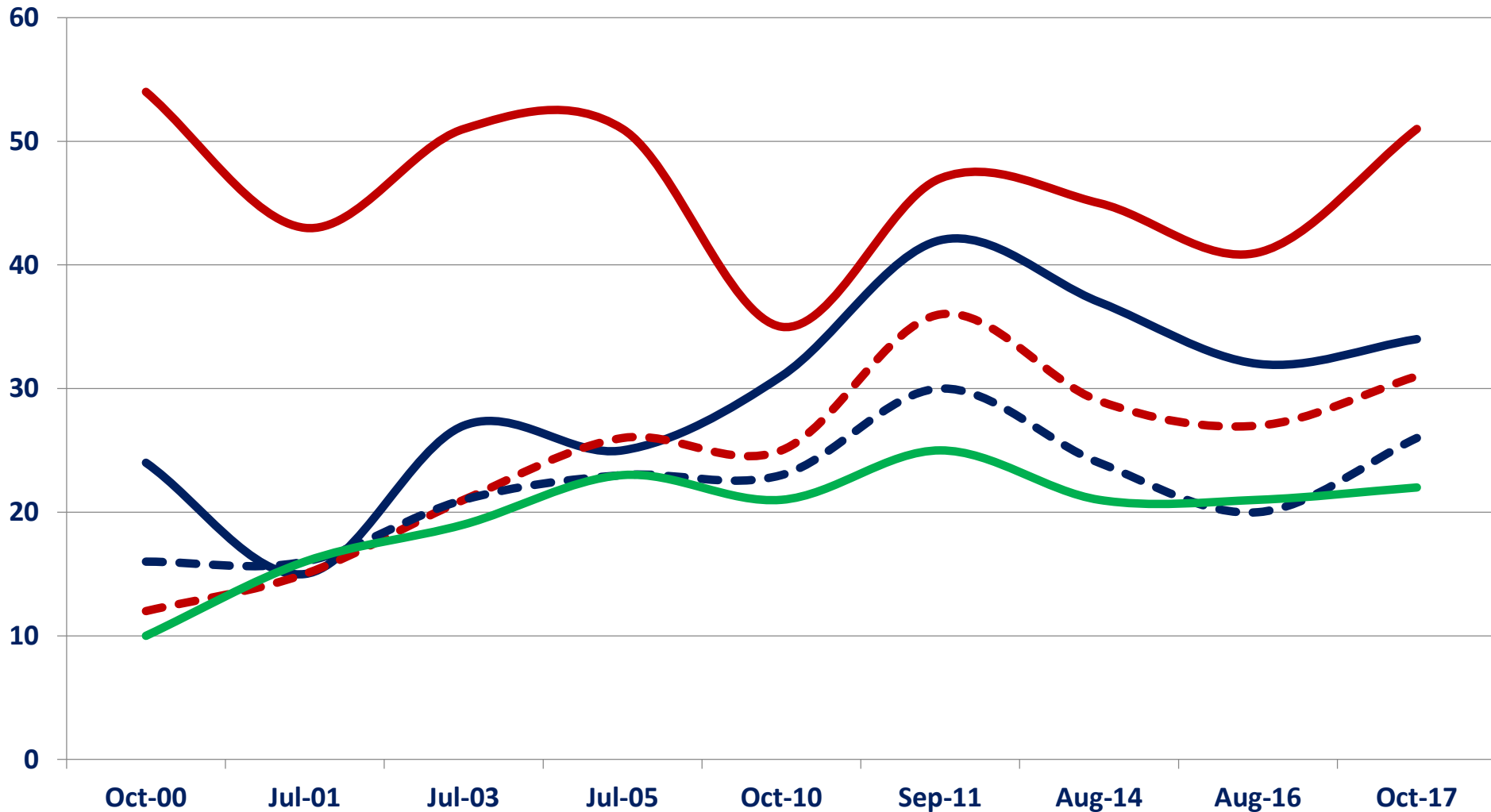


HOW IMPORTANT IN RUSSIA IS ROLE OF ..?
(the answers are ranked)

| | Jan-01 | Jan-07 | Jan-12 | Jan-16 | Jan-17 |
|--|---------------|---------------|---------------|---------------|---------------|
| PRESIDENT | 3,9 | 4,2 | 3,9 | 4,6 | 4,6 |
| FSB, SPESIAL SERVICES | 3,2 | 3,8 | 3,6 | 4 | 4 |
| ARMED FORCES | 3,3 | 3,5 | 3,4 | 4 | 4 |
| PRESIDENTIAL ADMINISTRATION | 2,9 | 3,6 | 3,5 | 3,9 | 4 |
| GOVERNMENT | 3,5 | 3,5 | 3,6 | 3,7 | 3,8 |
| OLIGARCHS', BANKERS, FINANCIERS | 3,8 | 3,7 | 3,6 | 3,7 | 3,7 |
| PROSECUTOR'S OFFICE | 2,9 | 3,4 | 3,3 | 3,5 | 3,6 |
| THE FEDERATION COUNCIL | 3 | 3,2 | 3,1 | 3,5 | 3,5 |
| MASS MEDIA | 3,5 | 3,5 | 3,4 | 3,5 | 3,5 |
| THE JUDICIARY | 2,8 | 3,2 | 3,2 | 3,3 | 3,5 |
| THE STATE DUMA | 2,8 | 3 | 3 | 3,3 | 3,5 |
| THE POLICE | * | * | 3,1 | 3,3 | 3,4 |
| GOVERNORS | 3,4 | 3,3 | 3,2 | 3,7 | 3,4 |
| DIRECTORS OF LARGE ENTERPRISES | 3,3 | 3,2 | 3,1 | 3,2 | 3,3 |
| CHURCH | 2,9 | 3,3 | 3 | 3,3 | 3,1 |
| POLITICAL PARTIES | 2,7 | 2,7 | 2,8 | 2,9 | 3,1 |
| INTELLIGENTSIA | 2,5 | 2,6 | 2,4 | 2,6 | 2,7 |
| UNIONS | 1,9 | 1,9 | 1,9 | 2 | 2,2 |
| NUMBER OF RESPONDENTS | 1600 | 1600 | 800 | 800 | 1600 |

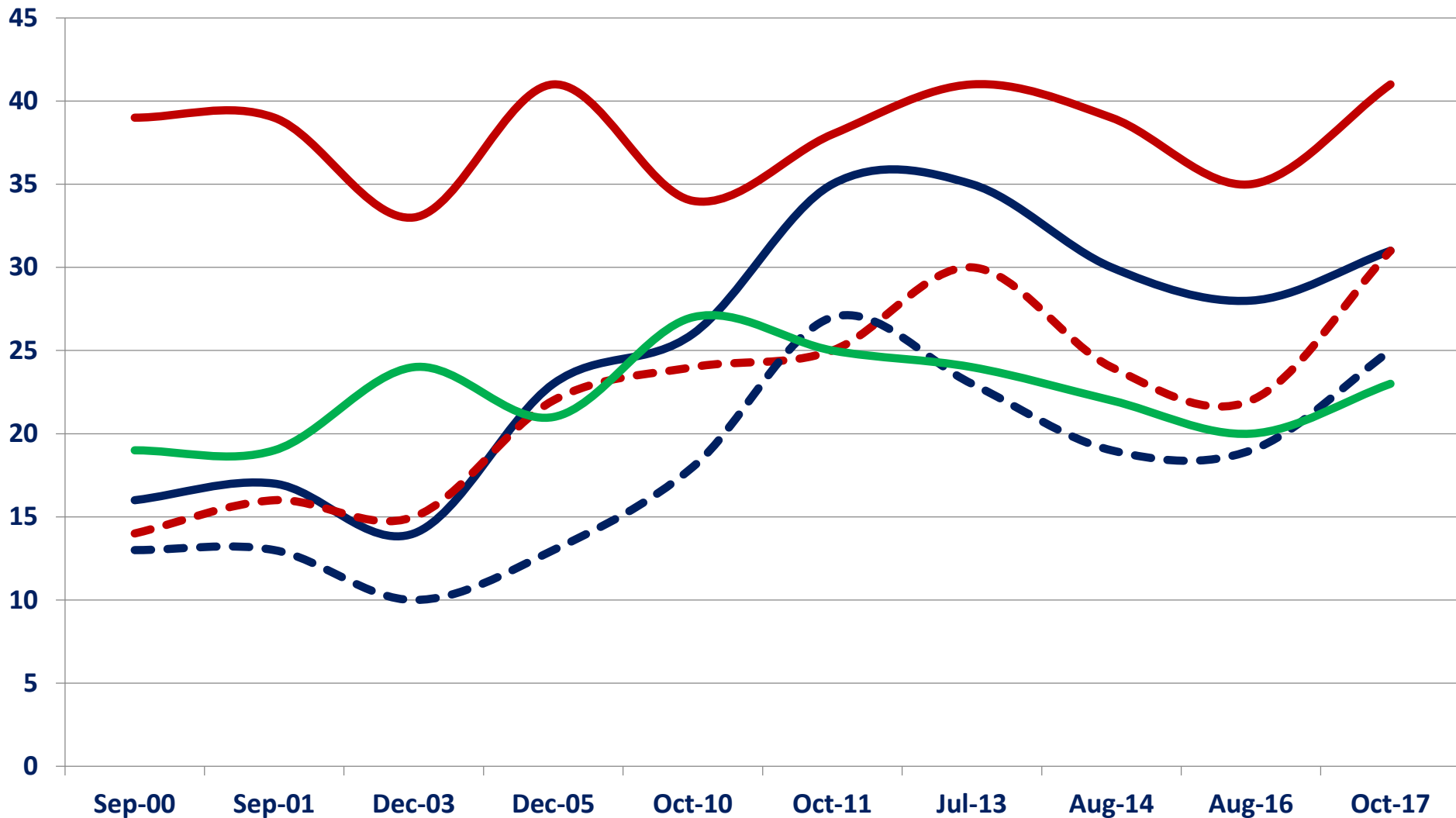
“IN YOUR OPINION, ON WHICH SEGMENTS OF THE POPULATION DOES V. PUTIN RELY ?”

- "SILOVIKI": WORKERS OF SPECIAL SERVICES, ARMY, MINISTRY OF INTERNAL AFFAIRS
- "OLIGARCHS", BANKERS, LARGE BUSINESSMEN
- - GOVERNMENT OFFICIALS, BUREAUCRACY
- - "DIRECTOR'S CORPUS": HEADS OF LARGE ENTERPRISES
- "MIDDLE-CLASS": PEOPLE WITH A GOOD INCOME



"IN YOUR VIEW, INTERESTS OF WHAT SEGMENTS OF THE POPULATION DOES V. PUTIN REPRESENT ?"

- "SILOVIKI": WORKERS OF SPESIAL SERVICES, ARMY, MINISTRY OF INTERNAL AFFAIRS**
- "OLIGARCHS", BANKERS, LARGE BUSINESSMEN**
- GOVERNMENT OFFICIALS, BUREAUCRACY**
- "DIRECTOR'S CORPUS": HEADS OF LARGE ENTERPRISES**
- "MIDDLE-CLASS": PEOPLE WITH A GOOD INCOME**



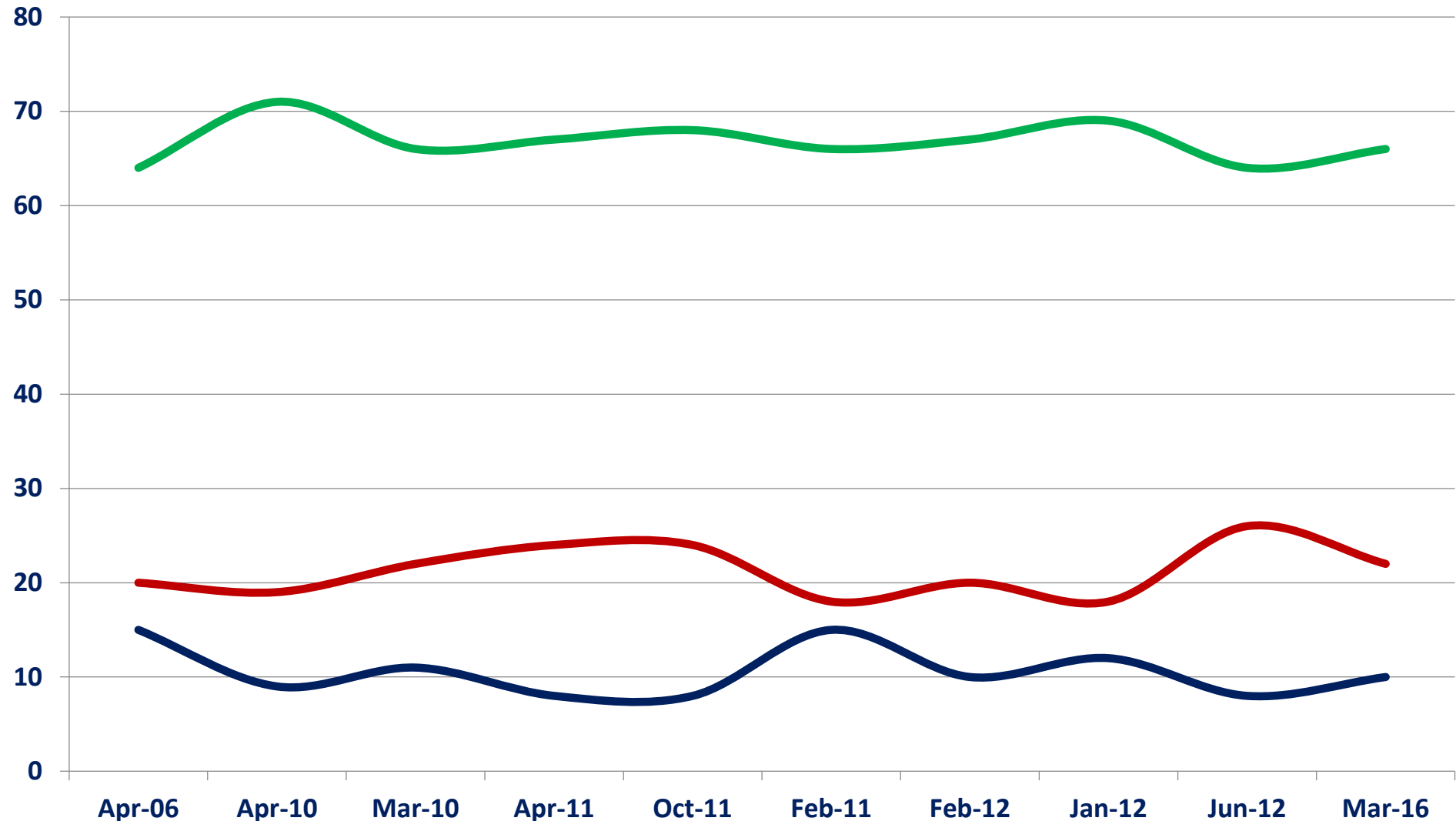


“TO WHAT EXTENT ARE YOU INTERESTED IN POLITICS?”

TO FULL EXTENT + TO A GREAT EXTENT

TO A SMALL EXTENT

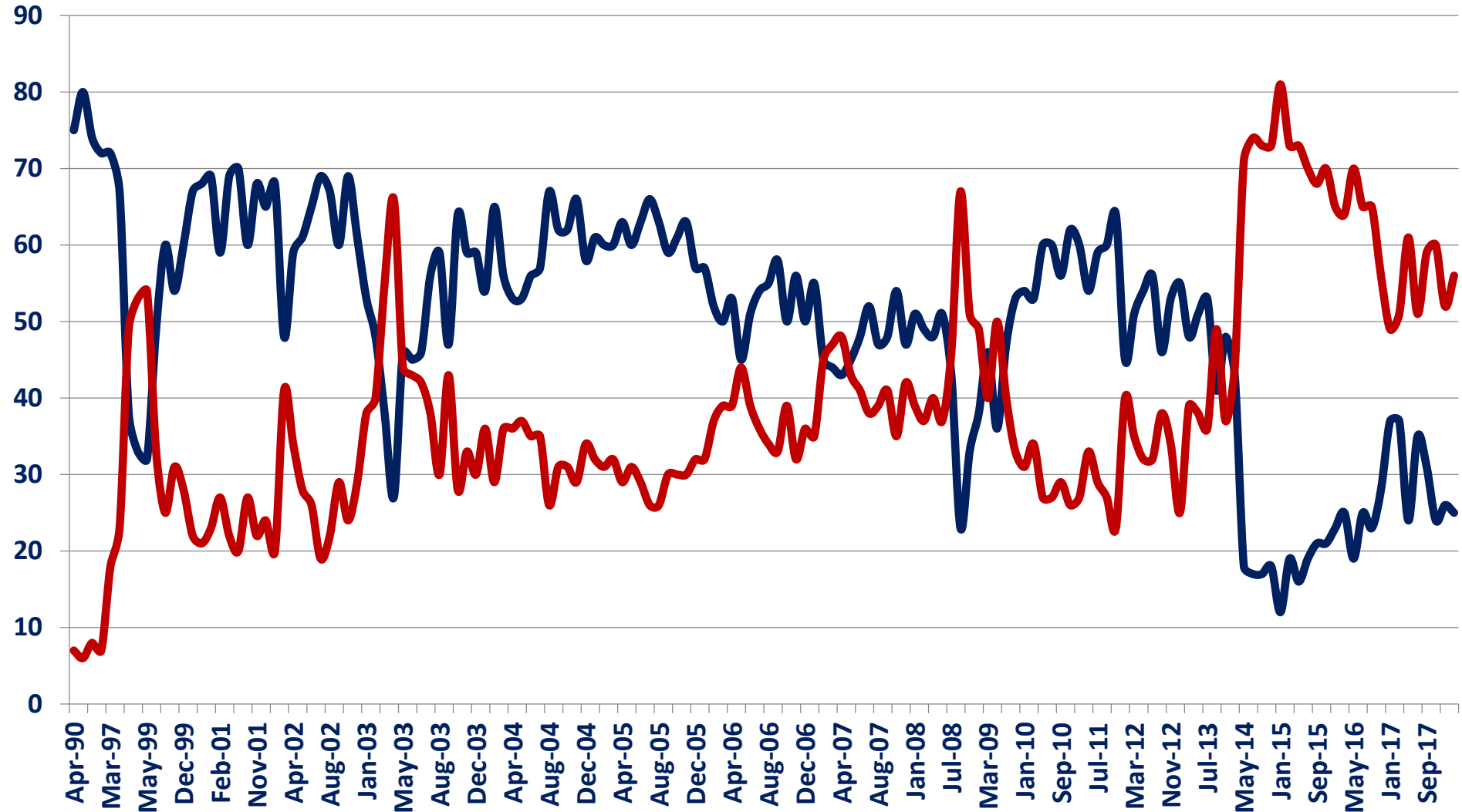
ABSOLUTELY NOT





ATTITUDE TOWARDS USA

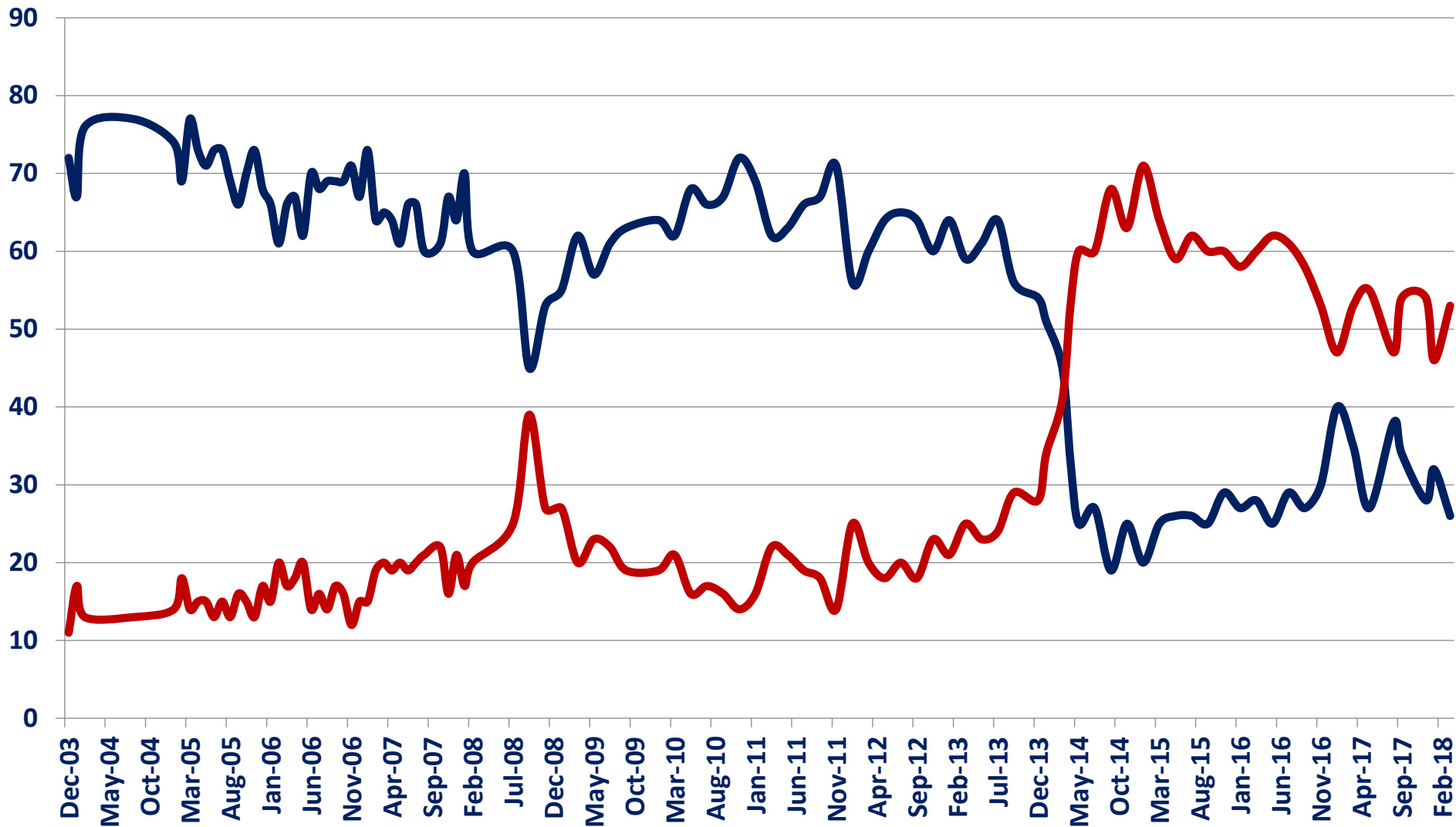
— POSITIVE — NEGATIVE





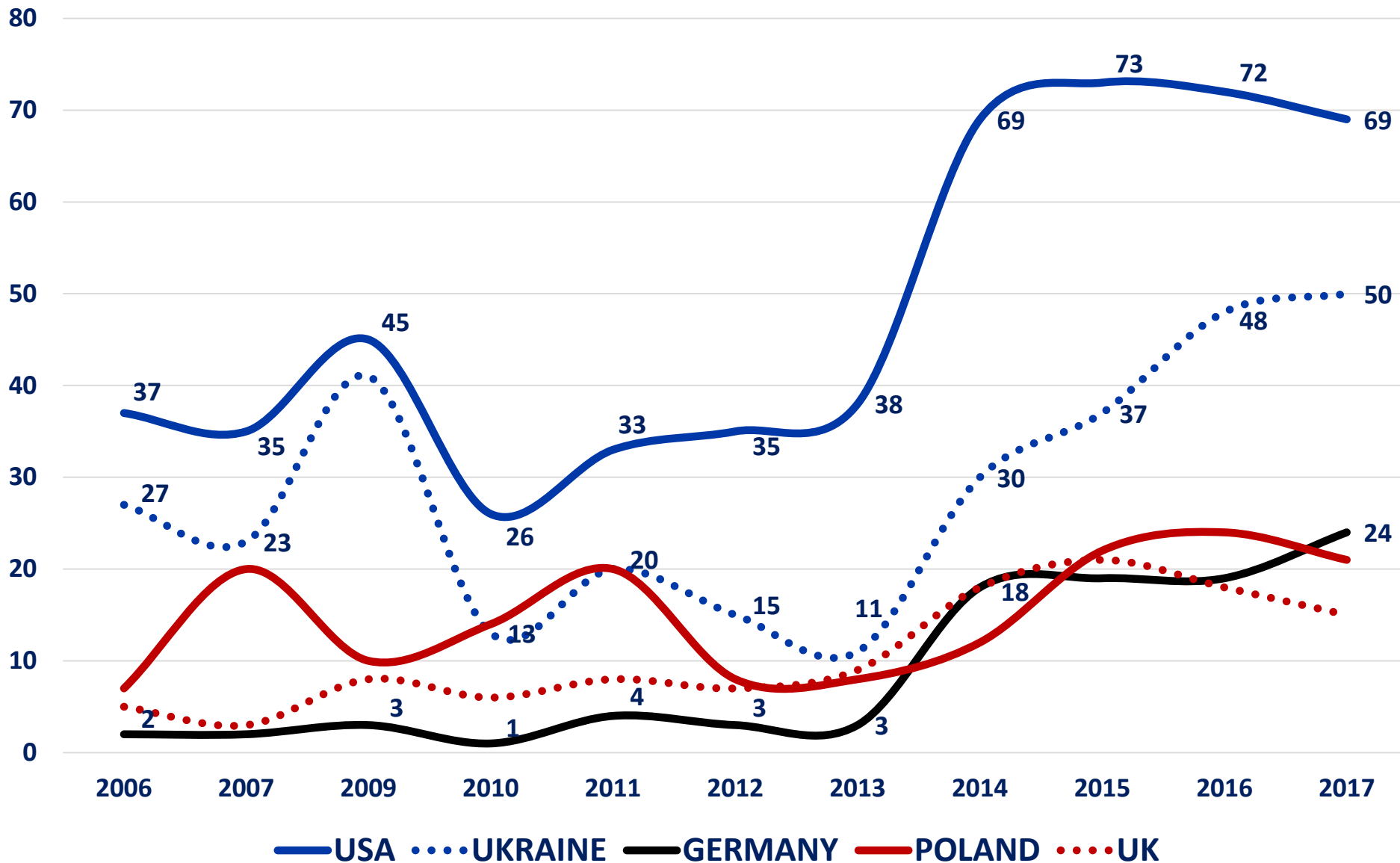
ATTITUDE TOWARDS EU

— POSITIVE — NEGATIVE



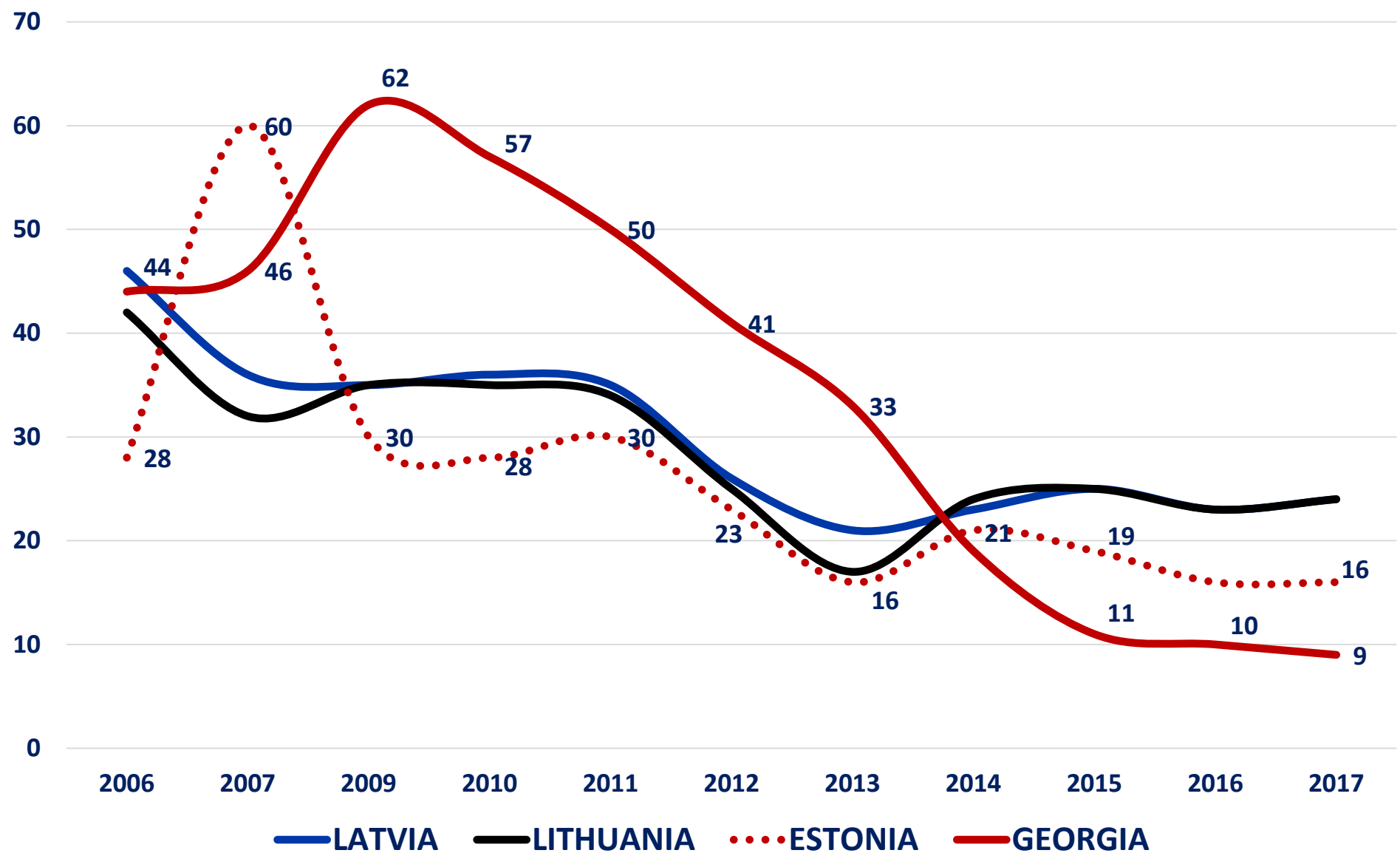


HOSTILE COUNTRIES



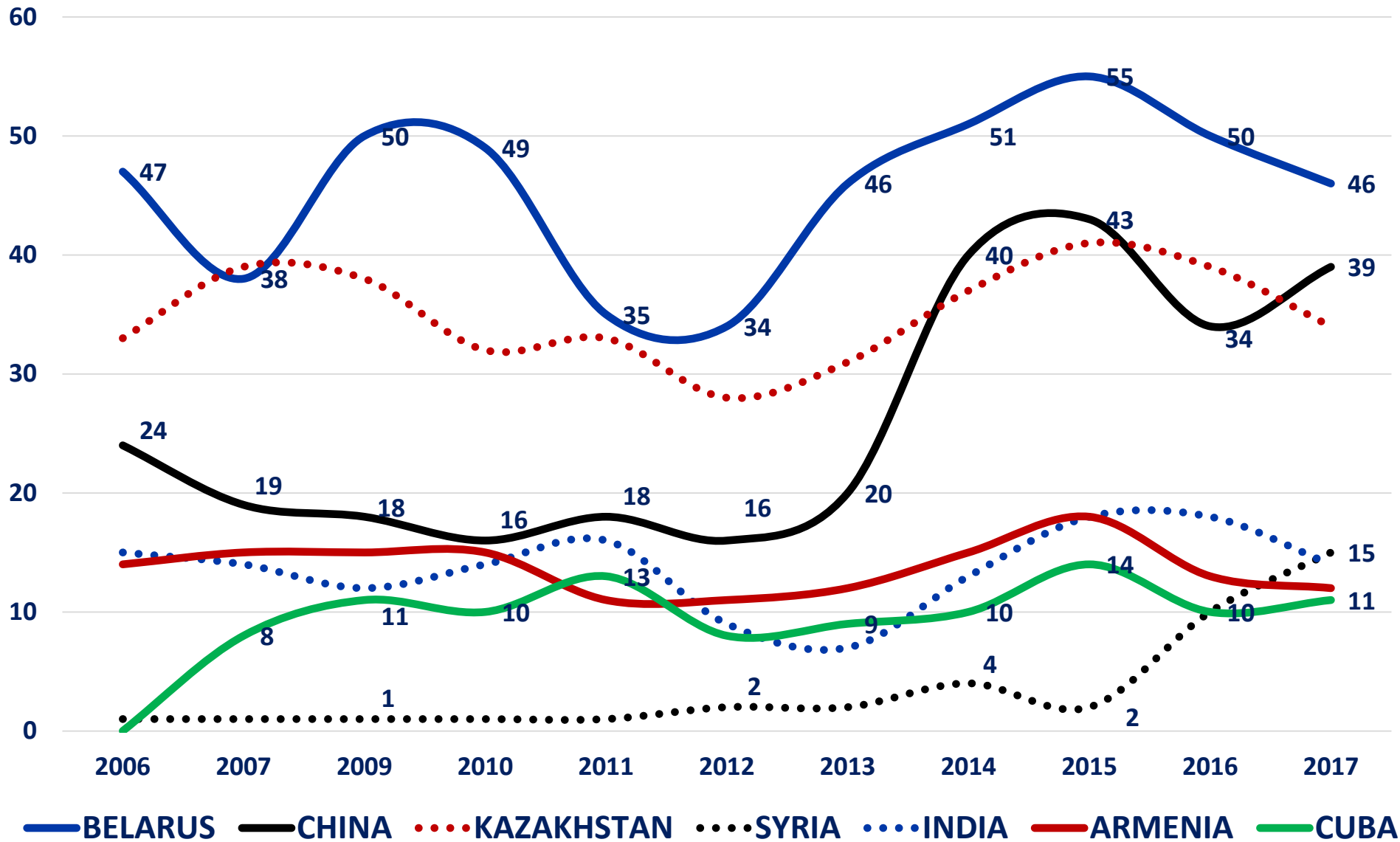


HOSTILE COUNTRIES





RUSSIA'S FRIENDS





ЛЕВАДА-ЦЕНТР

АНАЛИТИЧЕСКИЙ ЦЕНТР ЮРИЯ ЛЕВАДЫ

THANK YOU!
VISIT WWW.LEVADA.RU