



ЛЕВАДА-ЦЕНТР

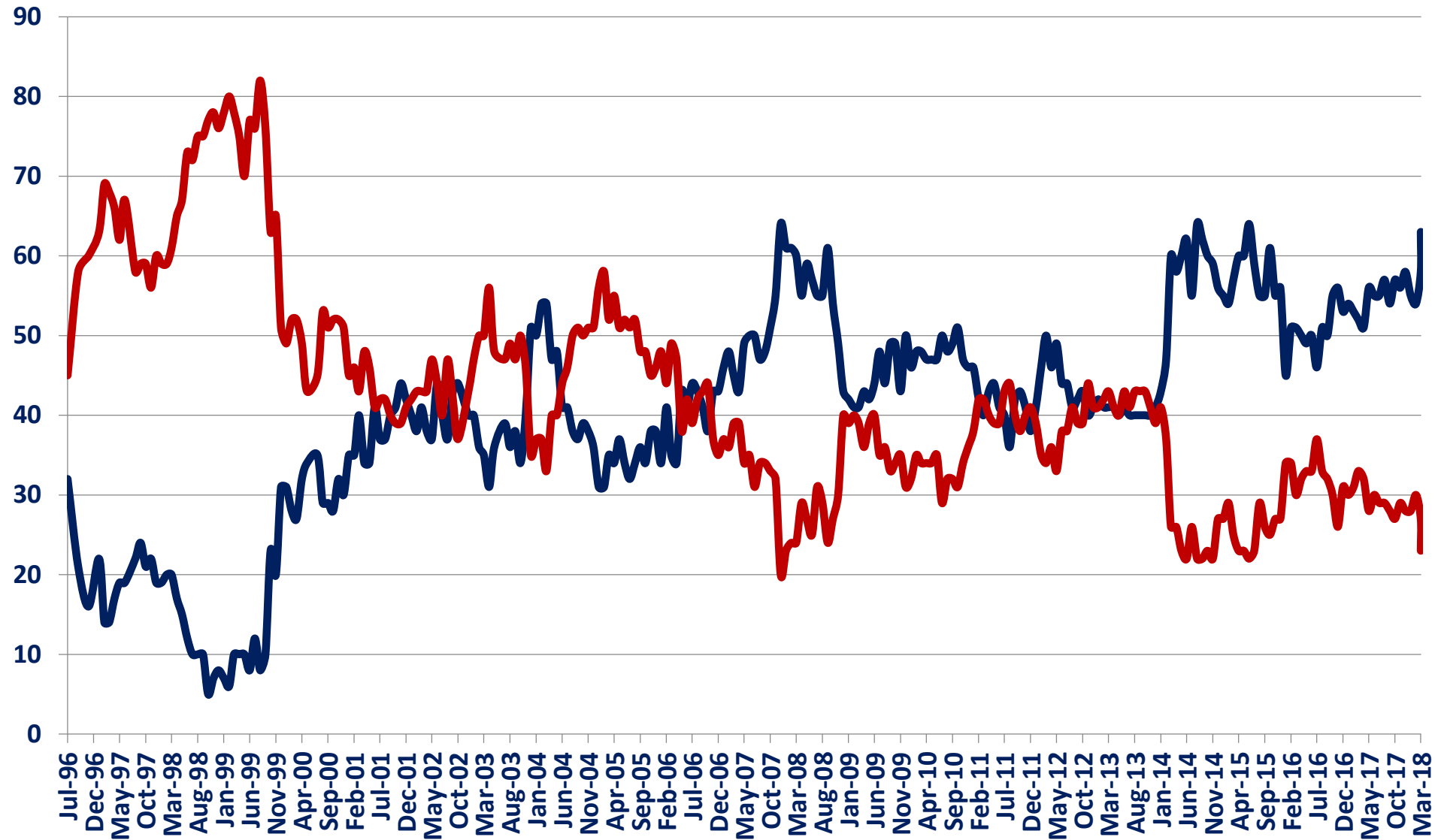
АНАЛИТИЧЕСКИЙ ЦЕНТР ЮРИЯ ЛЕВАДЫ

PRESIDENTIAL ELECTIONS IN RUSSIA, MARCH 2018



RIGHT vs WRONG DIRECTION

— IN THE RIGHT DIRECTION — ON THE WRONG TRACK

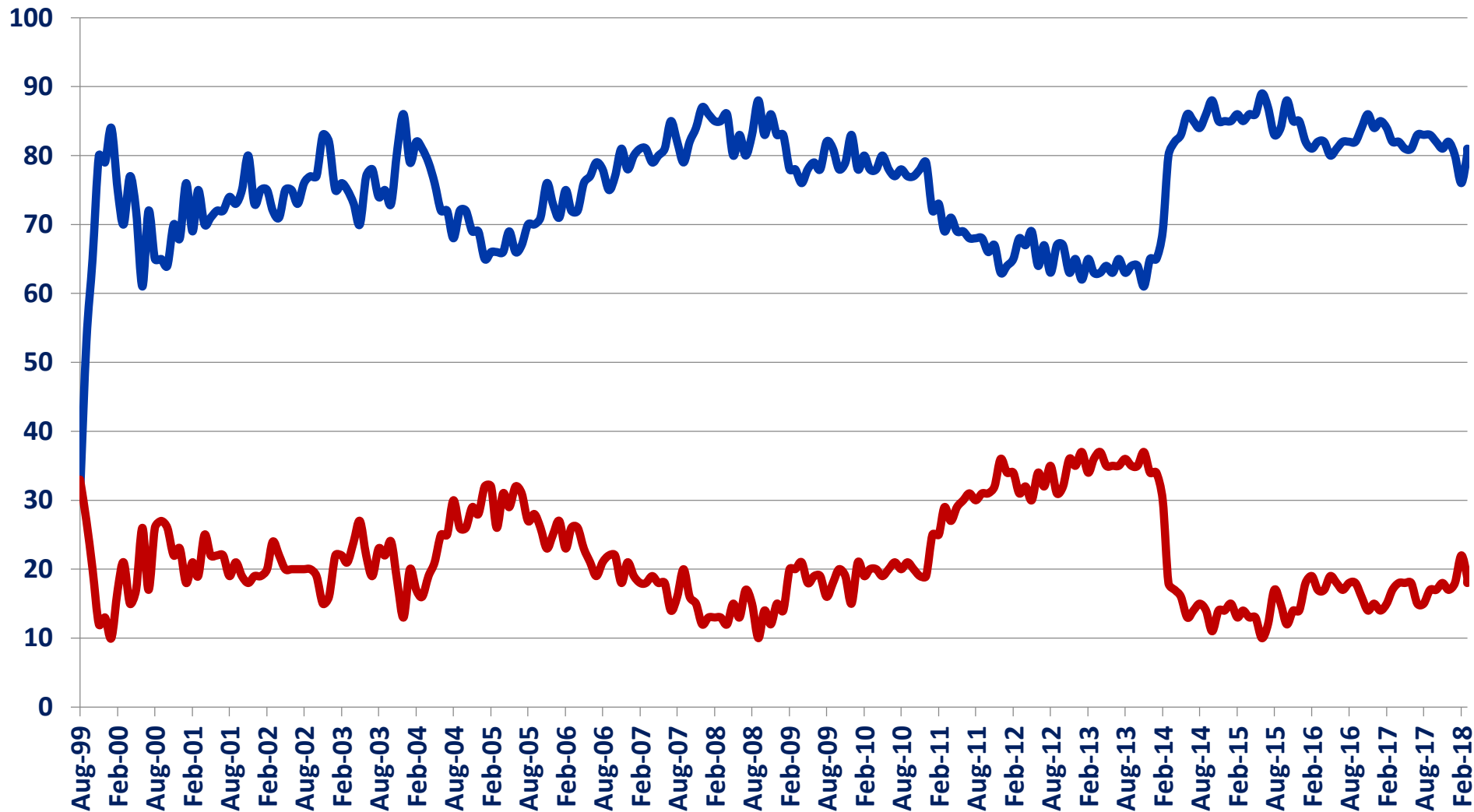




APPROVAL OF PUTIN

Do you approve the activities of V. Putin as the President (Prime Minister) of Russia?

— APPROVE — DISAPPROVE

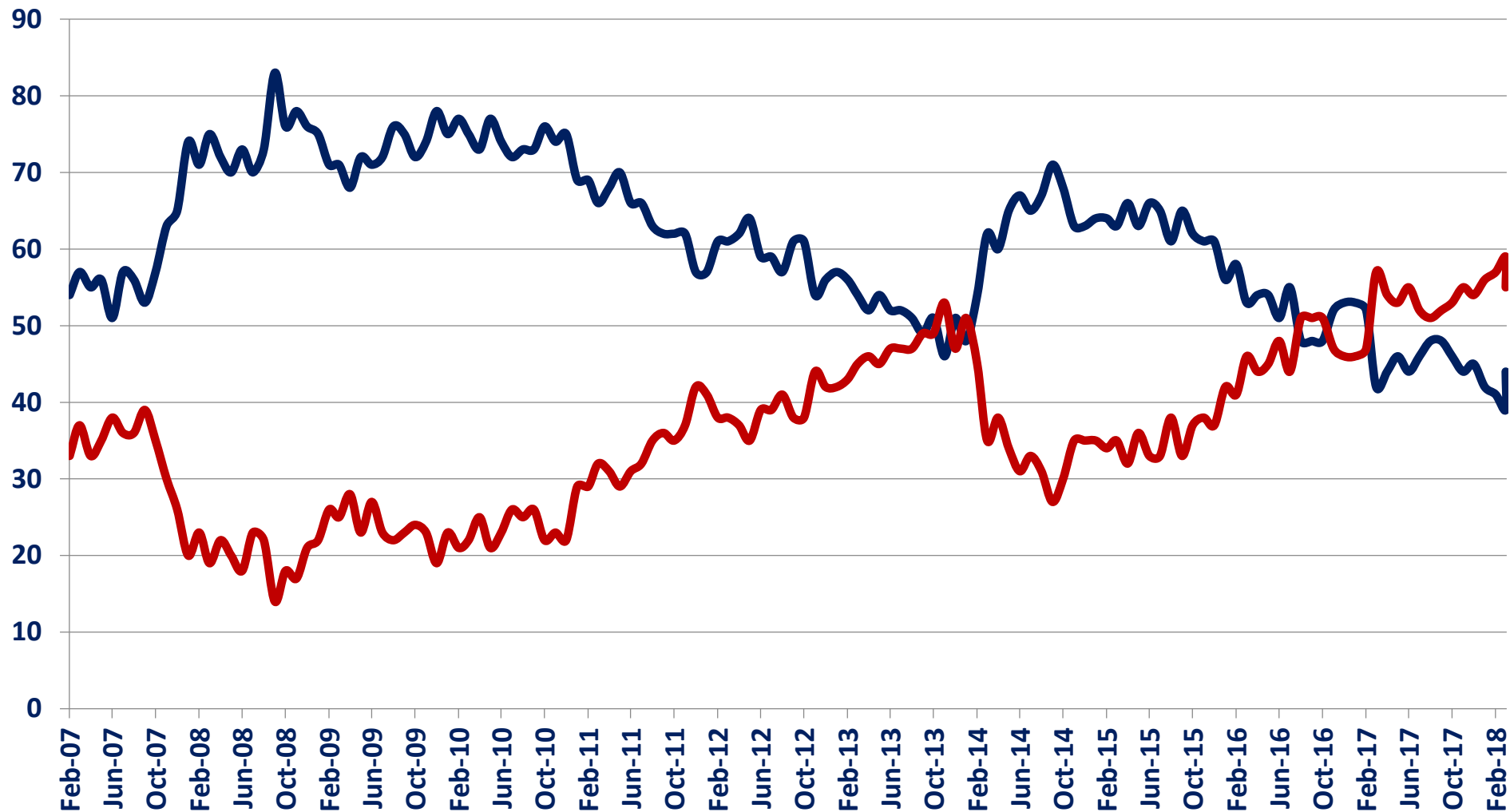




APPROVAL OF MEDVEDEV

Do you approve the activities of D. Medvedev as Prime Minister (the President) of Russia?

— APPROVE — DISAPPROVE

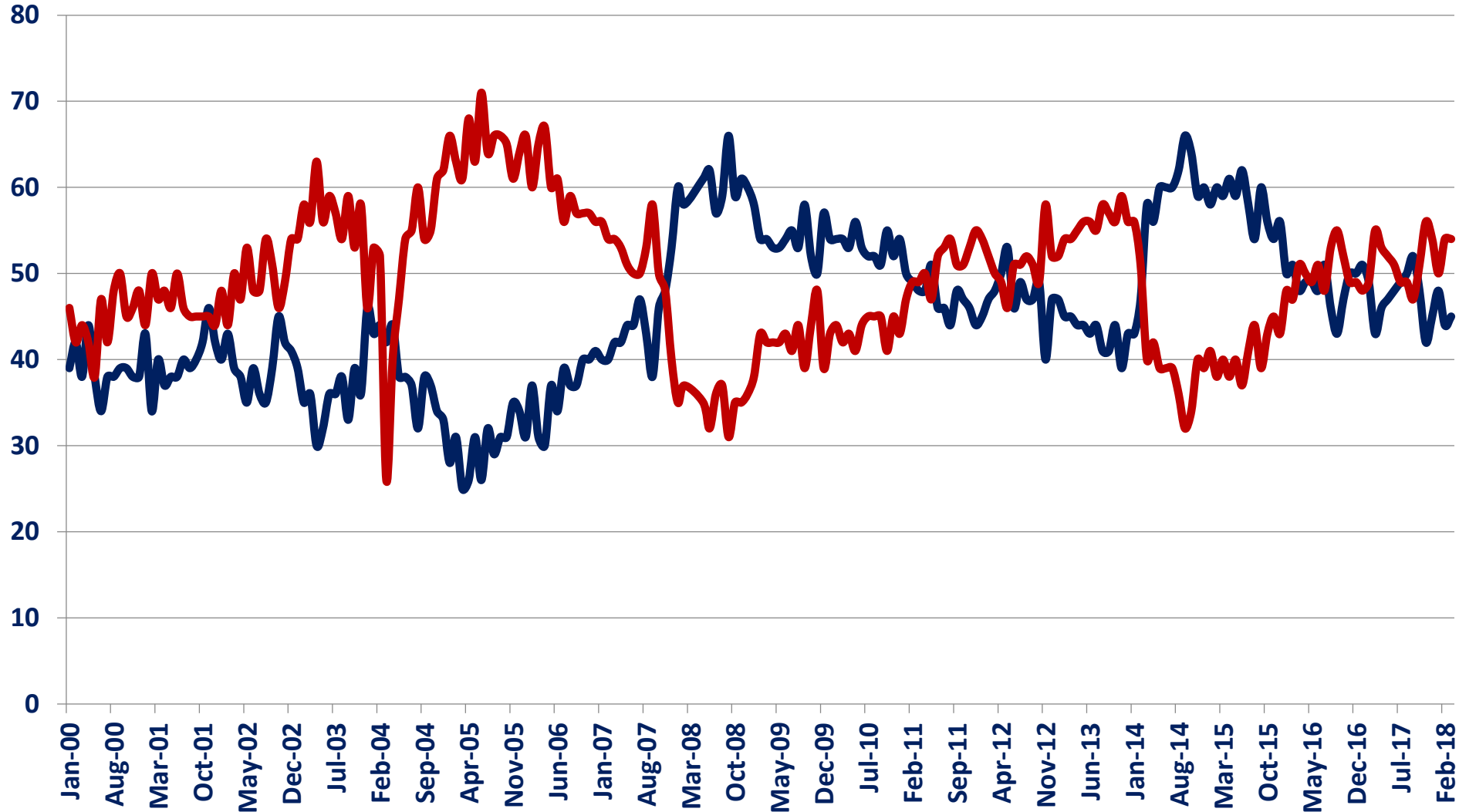




APPROVAL OF THE GOVERNMENT

«Do you approve the activities of the Russian Government?»

— APPROVE — DISAPPROVE

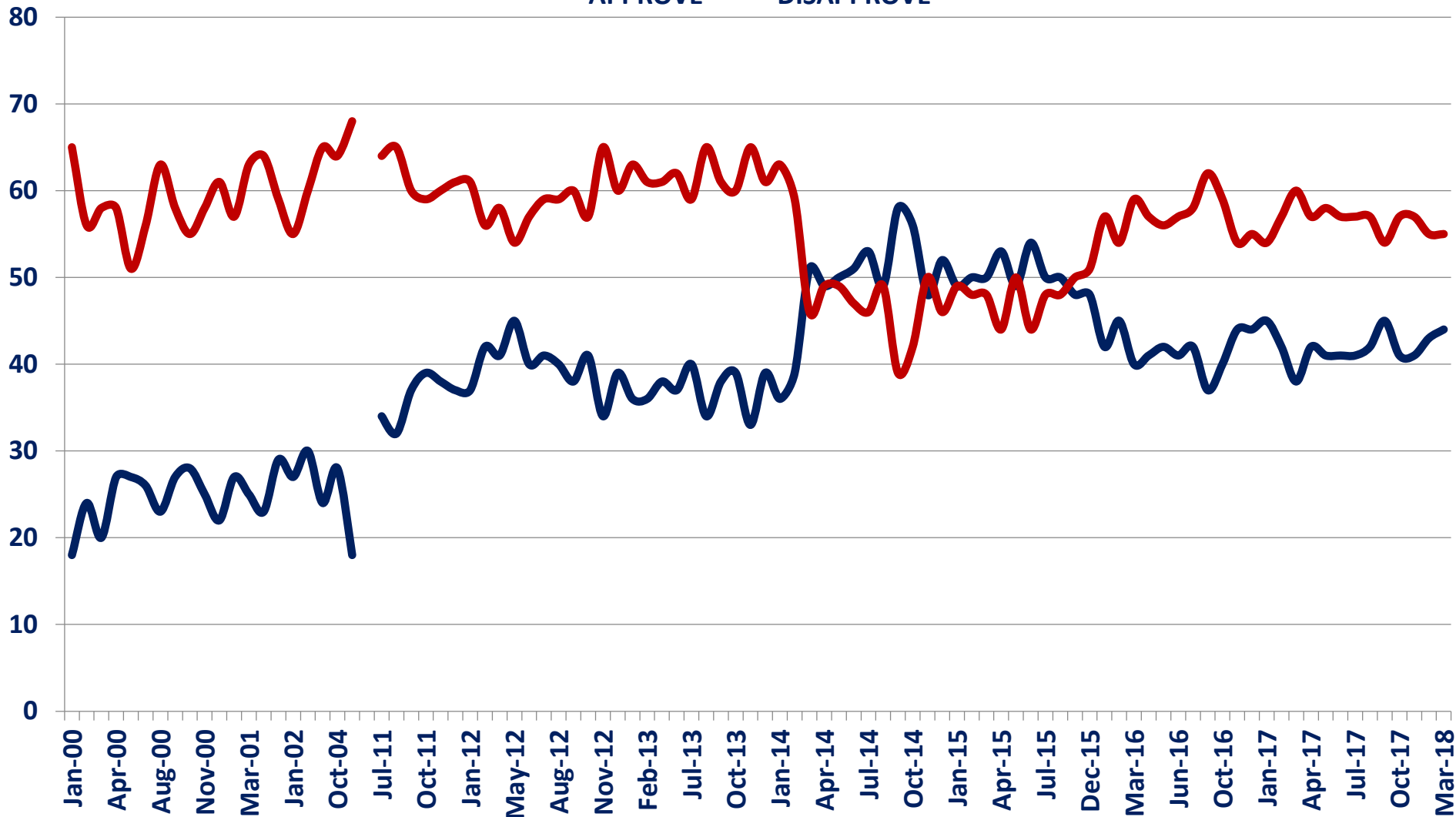




APPROVAL OF THE STATE DUMA

«Do you approve the activities of the State Duma?»

— APPROVE — DISAPPROVE



THE BALANCE OF ACHIEVEMENTS AND FAILURES OF V. PUTIN

(the difference between positive and negative answers)

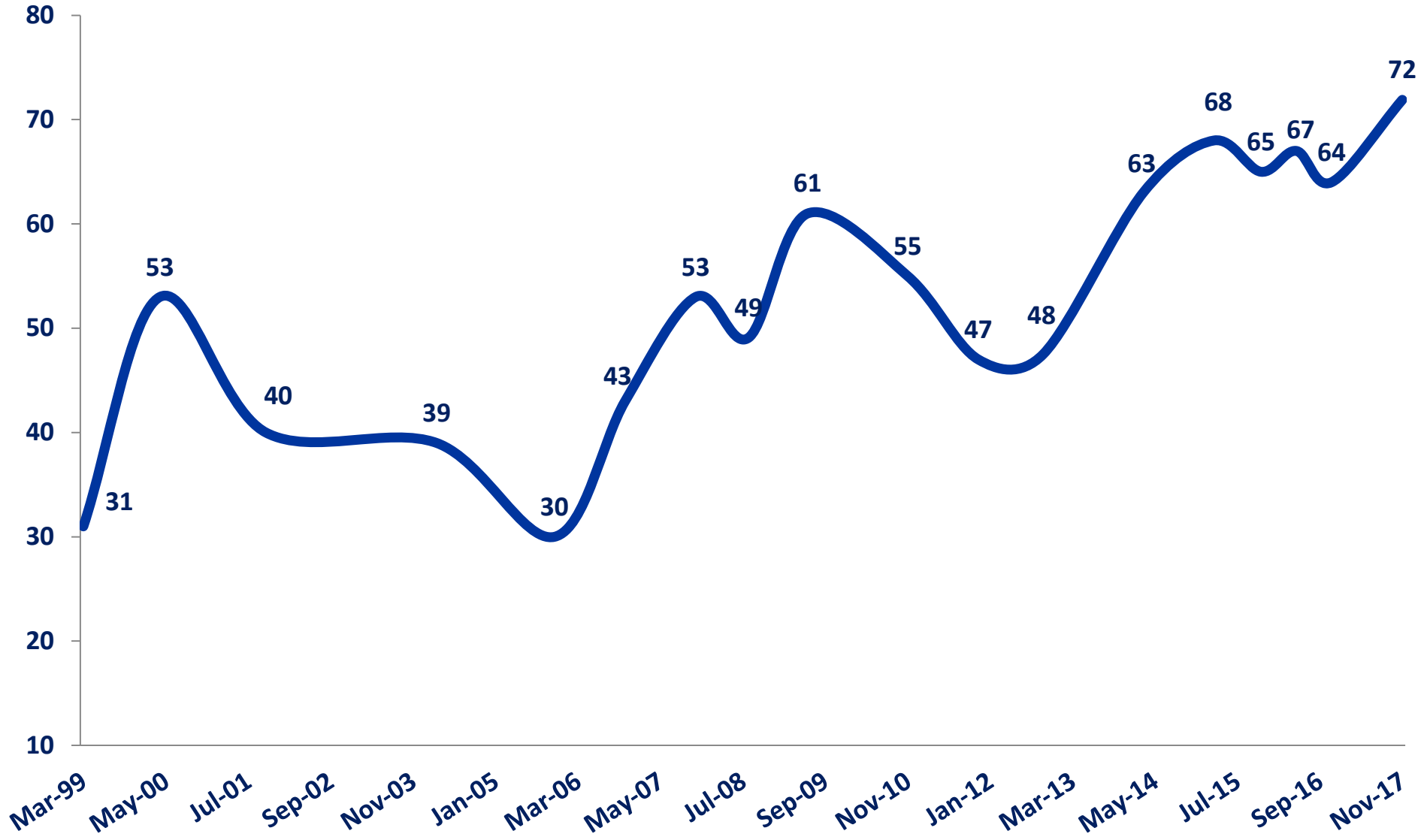
«WHAT WOULD YOU CALL V. PUTIN'S MAIN ACHIEVEMENT DURING HIS TERM IN OFFICE? »

«WHAT WOULD YOU CALL V. PUTIN'S BIGGEST FAILURE DURING HIS TERM IN OFFICE? »

	Aug-10	Feb-13	Mar-14	Mar-15
STRENGTHENING RUSSIA'S POSITION IN THE WORLD	23	16	42	36
SOLVING THE CHECHEN PROBLEM	-10	-5	14	29
OVERCOMING THE SEPARATIST SENTIMENTS, PREVENTING RUSSIA'S DESINTAGRATION	-	16	22	27
COPE WITH THE CONSEQUENCES OF THE 2008 ECONOMIC CRISIS	-	9	14	23
KEEPING RUSSIA ON THE PATH OF REFORMS	16	14	11	20
IMPROVEMENT OF THE LIVING STANDARTS, SALARIES AND PENSIONS	32	5	2	14
COUNTINUATION OF REFORMS BUT WITH GREATER REGARD OF SOCIAL NEEDS	12	-7	-2	0
COOPERATION WITH OTHER CIS COUNTRIES	10	6	3	6
INTRODUCONG OF ORDER, MAINTAINING A CALM POLITICAL SITUATION	2	-14	-15	-4
OVERCOMING OF THE ECONOMIC CRISIS	-6	-8	-12	-13
COMPENSATING THE MONEY LOST IN THE COURSE OF REFORMS	-15	-21	-28	-29
ENSURING OF JUST DISTRIBUTION OF INCOME IN ACCORDANCE WITH THE PEOPLE'S INTERESTS	-26	-40	-33	-35
NONE OF THE ABOVE	2	5	2	1
DIFFICULT TO ANSWER	5/13	8/8	10/15	6/16



RUSSIA IS A GREAT POWER



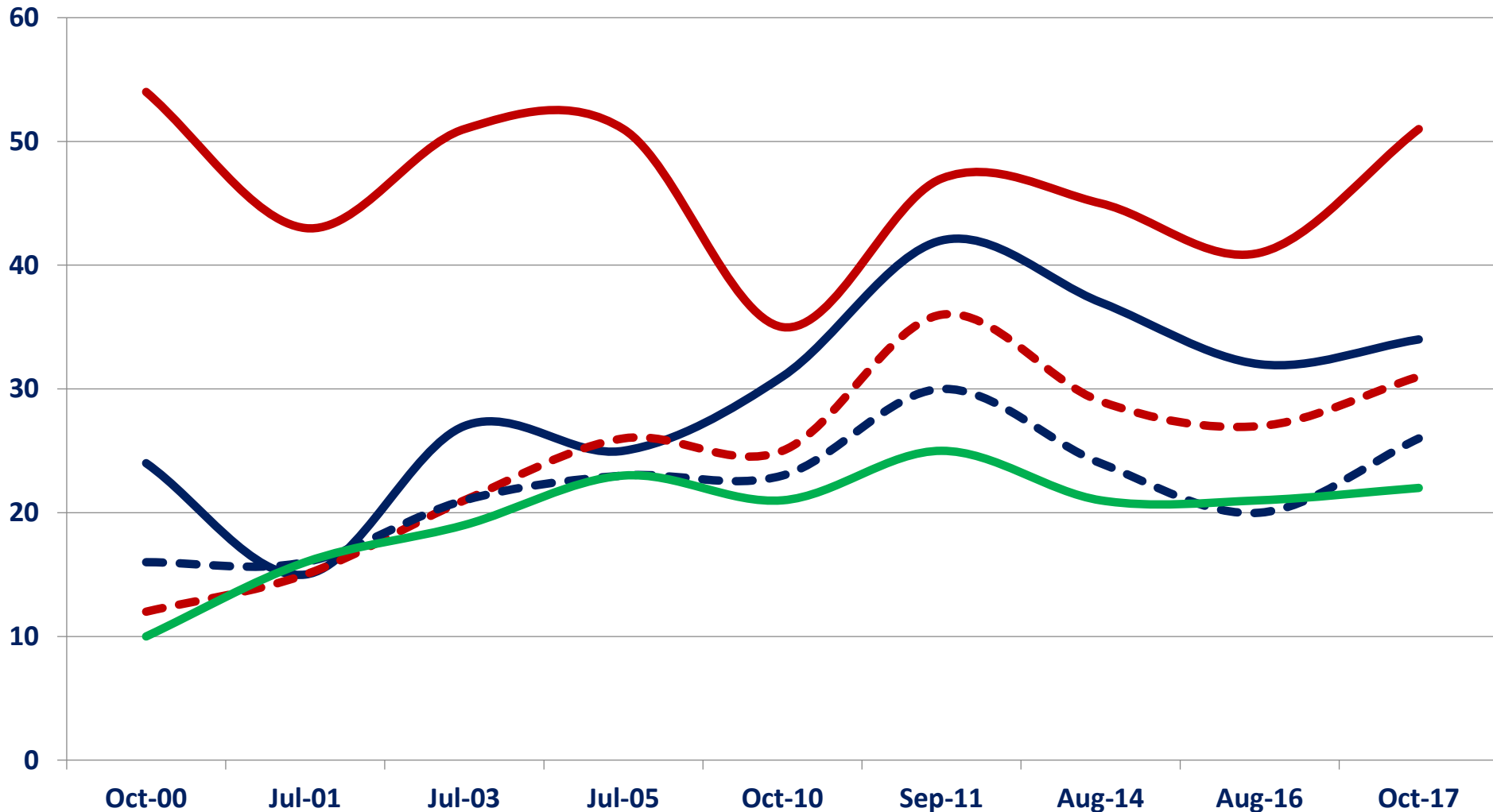


HOW IMPORTANT IN RUSSIA IS ROLE OF ..?
(the answers are ranked)

	Jan-01	Jan-07	Jan-12	Jan-16	Jan-17
PRESIDENT	3,9	4,2	3,9	4,6	4,6
FSB, SPESIAL SERVICES	3,2	3,8	3,6	4	4
ARMED FORCES	3,3	3,5	3,4	4	4
PRESIDENTIAL ADMINISTRATION	2,9	3,6	3,5	3,9	4
GOVERNMENT	3,5	3,5	3,6	3,7	3,8
OLIGARCHS', BANKERS, FINANCIERS	3,8	3,7	3,6	3,7	3,7
PROSECUTOR'S OFFICE	2,9	3,4	3,3	3,5	3,6
THE FEDERATION COUNCIL	3	3,2	3,1	3,5	3,5
MASS MEDIA	3,5	3,5	3,4	3,5	3,5
THE JUDICIARY	2,8	3,2	3,2	3,3	3,5
THE STATE DUMA	2,8	3	3	3,3	3,5
THE POLICE	*	*	3,1	3,3	3,4
GOVERNORS	3,4	3,3	3,2	3,7	3,4
DIRECTORS OF LARGE ENTERPRISES	3,3	3,2	3,1	3,2	3,3
CHURCH	2,9	3,3	3	3,3	3,1
POLITICAL PARTIES	2,7	2,7	2,8	2,9	3,1
INTELLIGENTSIA	2,5	2,6	2,4	2,6	2,7
UNIONS	1,9	1,9	1,9	2	2,2
NUMBER OF RESPONDENTS	1600	1600	800	800	1600

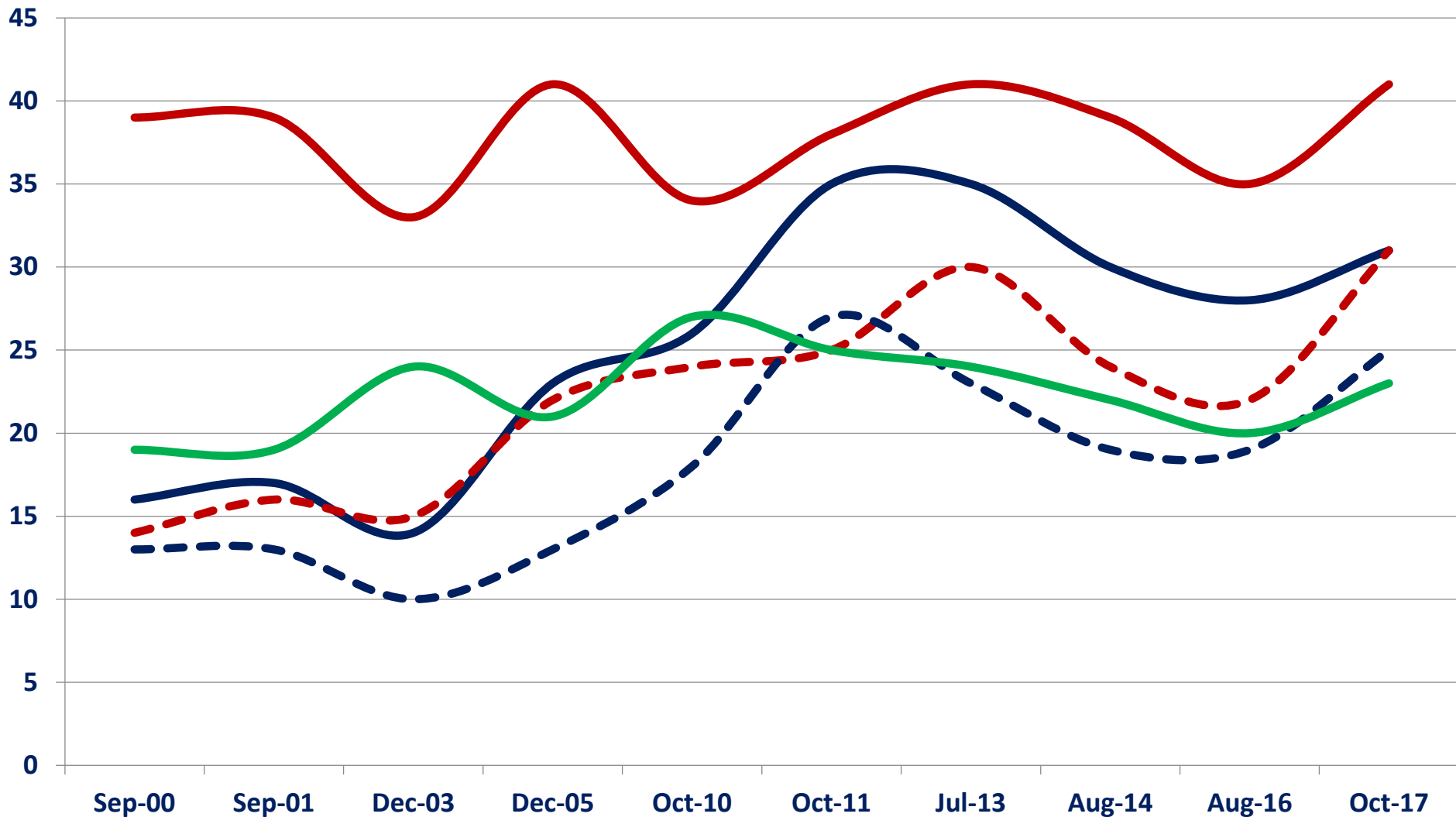
“IN YOUR OPINION, ON WHICH SEGMENTS OF THE POPULATION DOES V. PUTIN RELY ?”

- "SILOVIKI": WORKERS OF SPECIAL SERVICES, ARMY, MINISTRY OF INTERNAL AFFAIRS
- "OLIGARCHS", BANKERS, LARGE BUSINESSMEN
- - GOVERNMENT OFFICIALS, BUREAUCRACY
- - "DIRECTOR'S CORPUS": HEADS OF LARGE ENTERPRISES
- "MIDDLE-CLASS": PEOPLE WITH A GOOD INCOME



"IN YOUR VIEW, INTERESTS OF WHAT SEGMENTS OF THE POPULATION DOES V. PUTIN REPRESENT ?"

- "SILOVIKI": WORKERS OF SPESIAL SERVICES, ARMY, MINISTRY OF INTERNAL AFFAIRS**
- "OLIGARCHS", BANKERS, LARGE BUSINESSMEN**
- GOVERNMENT OFFICIALS, BUREAUCRACY**
- "DIRECTOR'S CORPUS": HEADS OF LARGE ENTERPRISES**
- "MIDDLE-CLASS": PEOPLE WITH A GOOD INCOME**



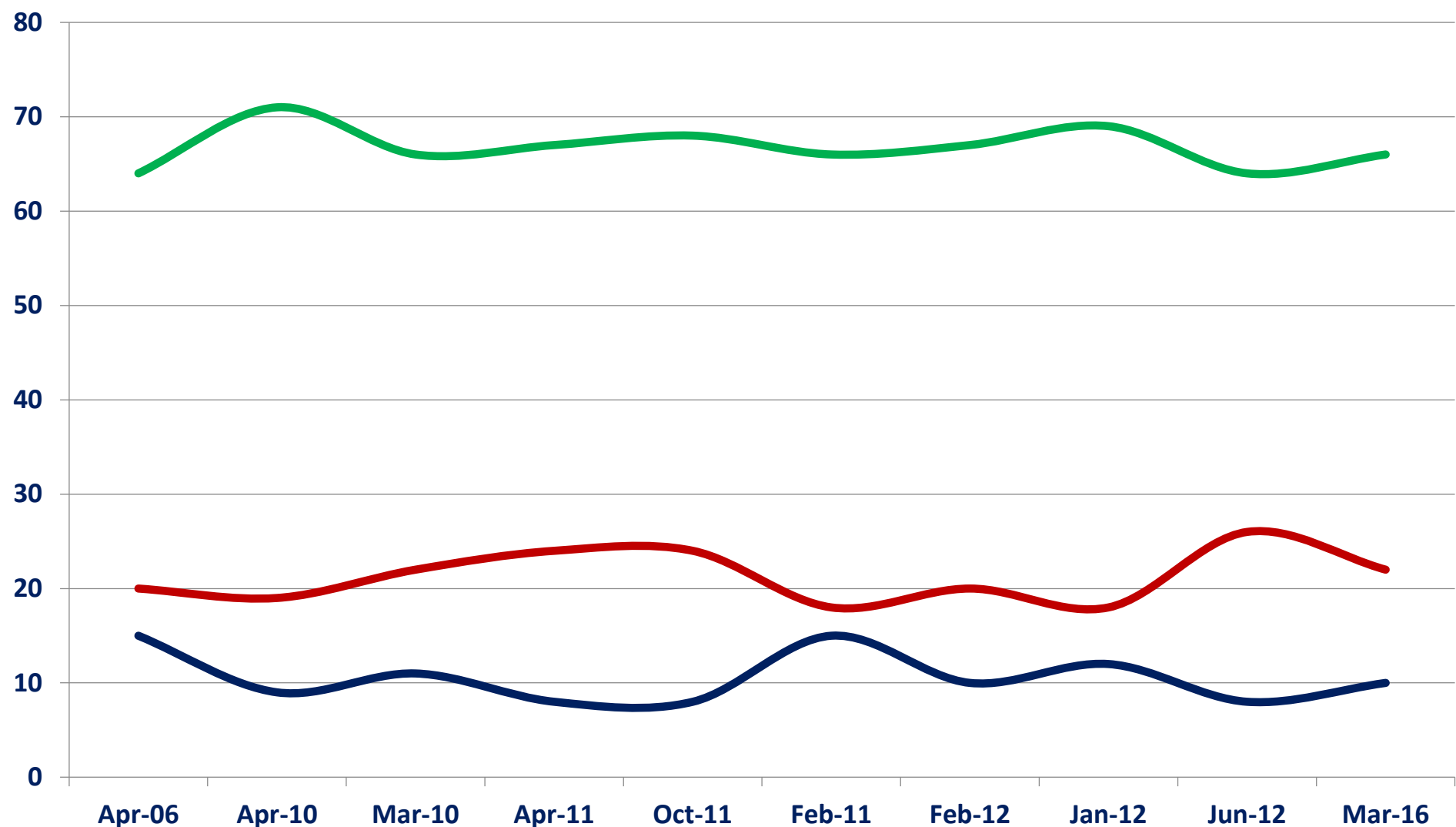


“TO WHAT EXTENT ARE YOU INTERESTED IN POLITICS?”

— TO FULL EXTENT + TO A GREAT EXTENT

— TO A SMALL EXTENT

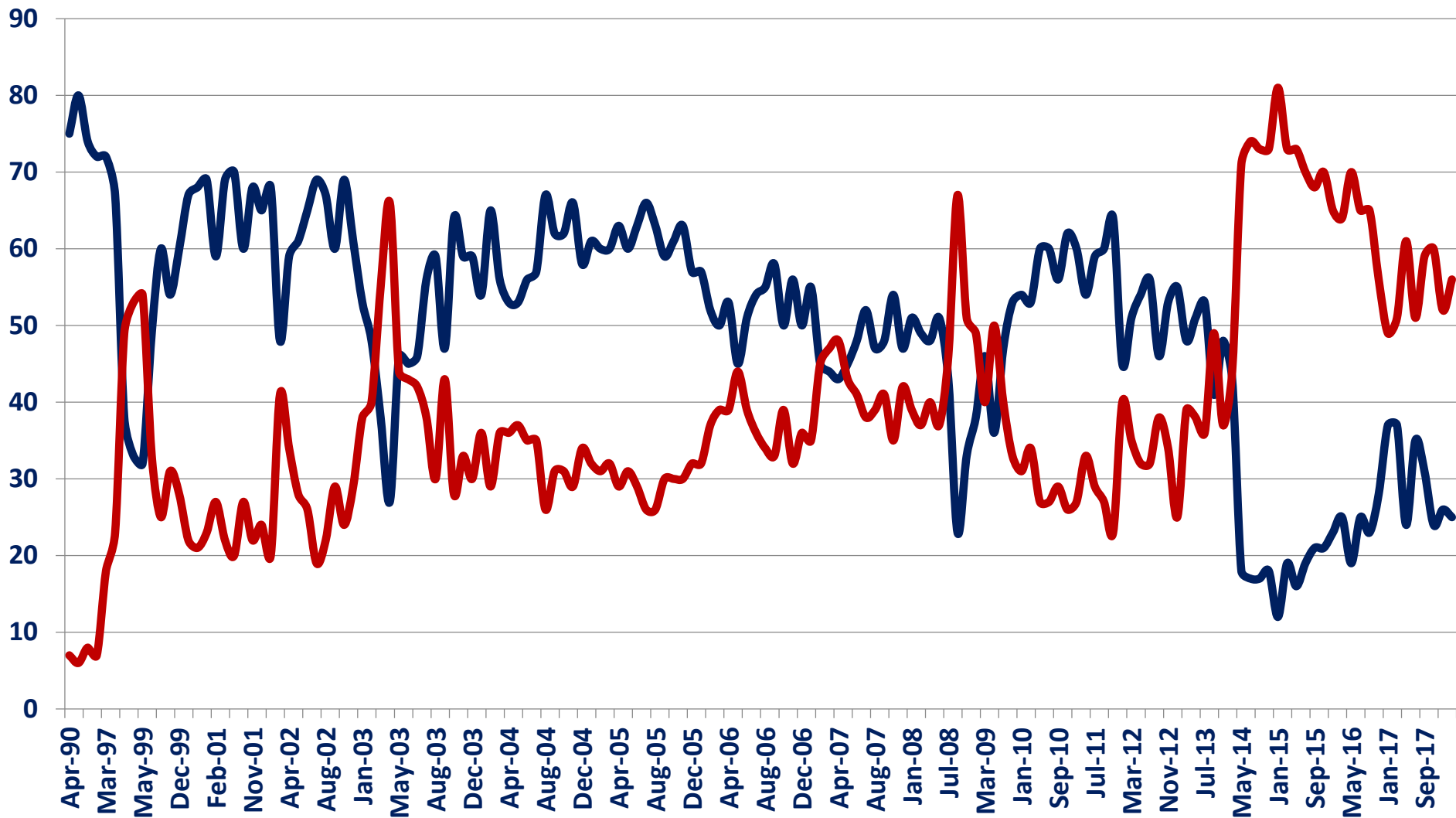
— ABSOLUTELY NOT





ATTITUDE TOWARDS USA

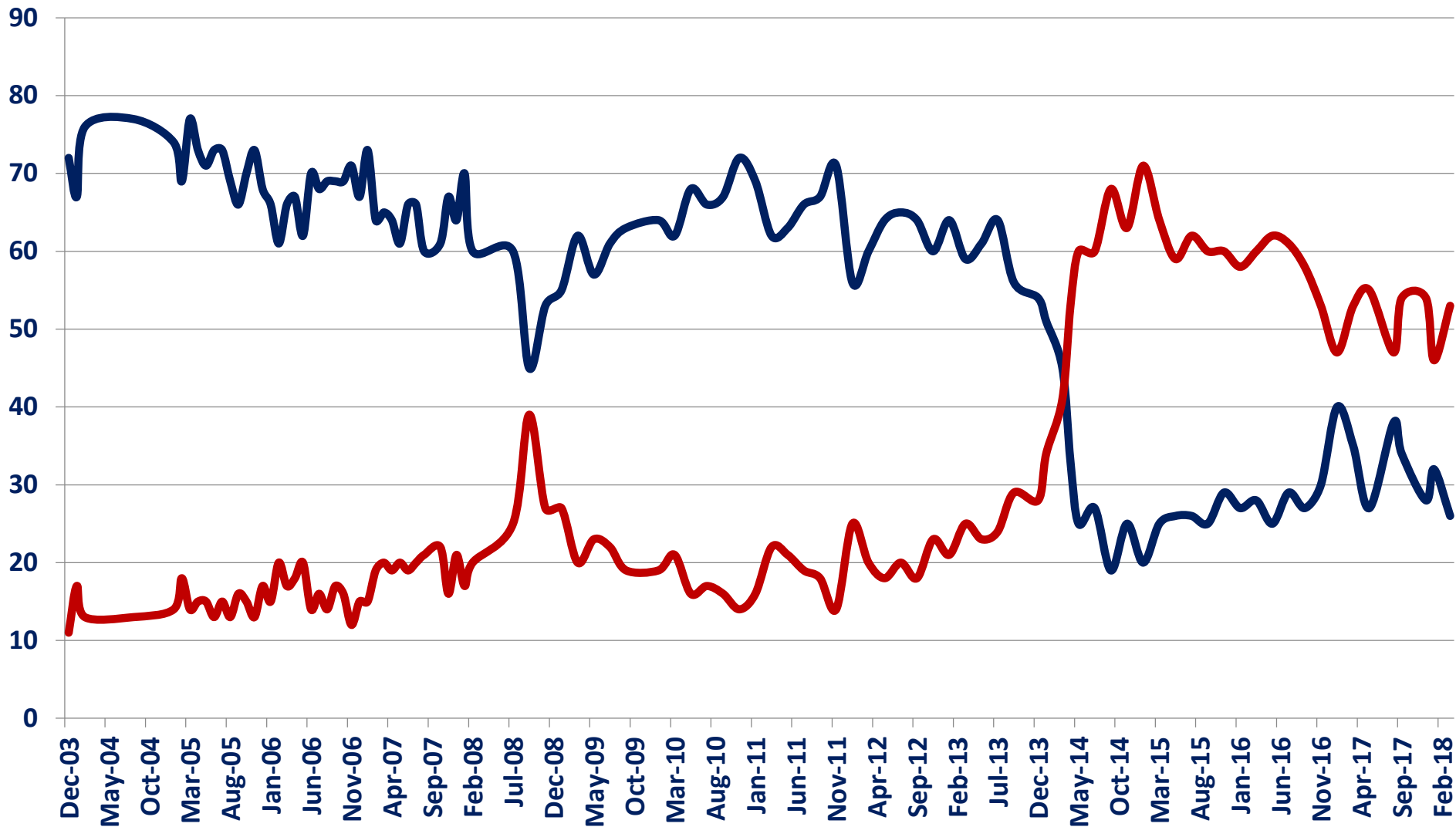
— POSITIVE — NEGATIVE





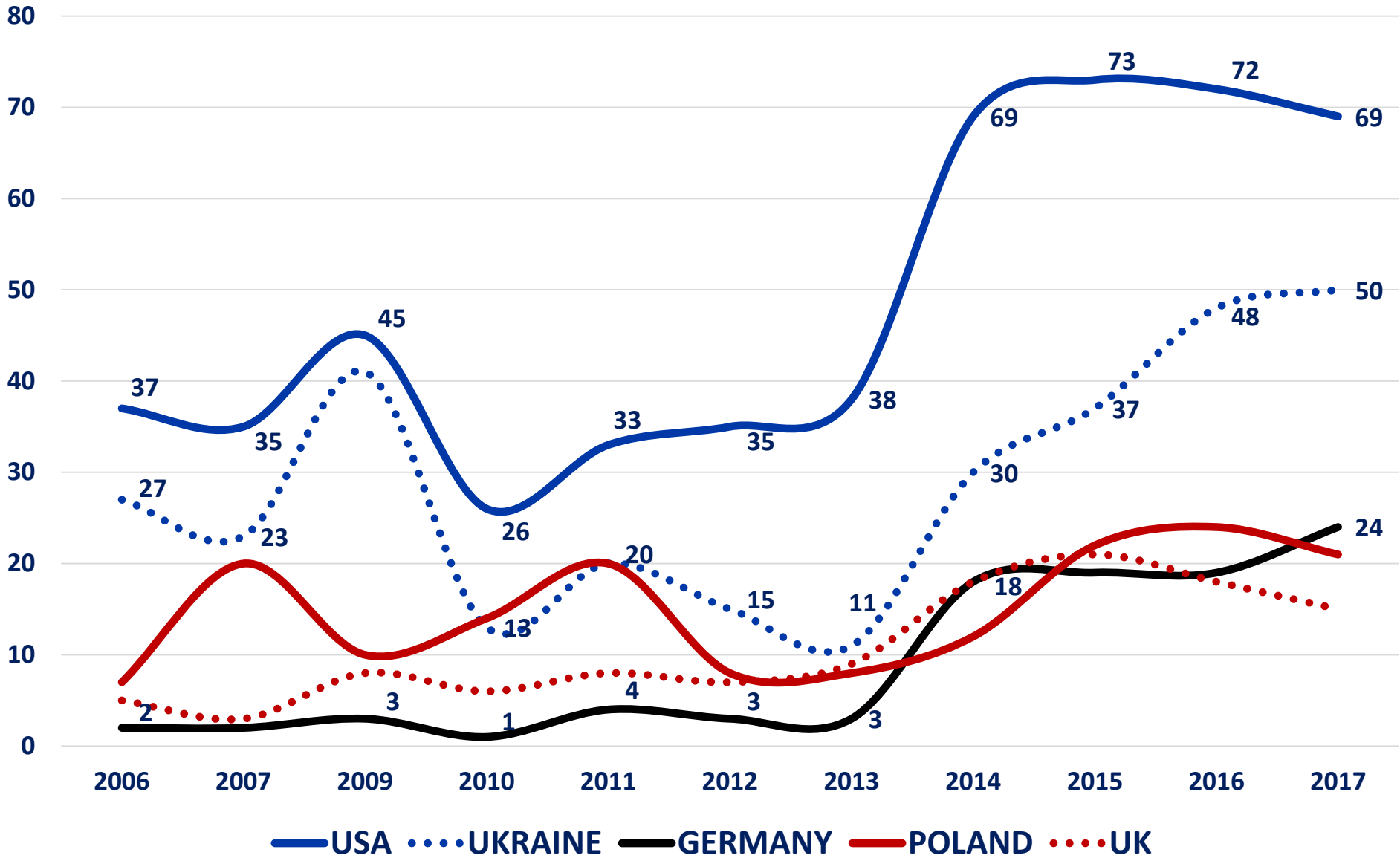
ATTITUDE TOWARDS EU

— POSITIVE — NEGATIVE

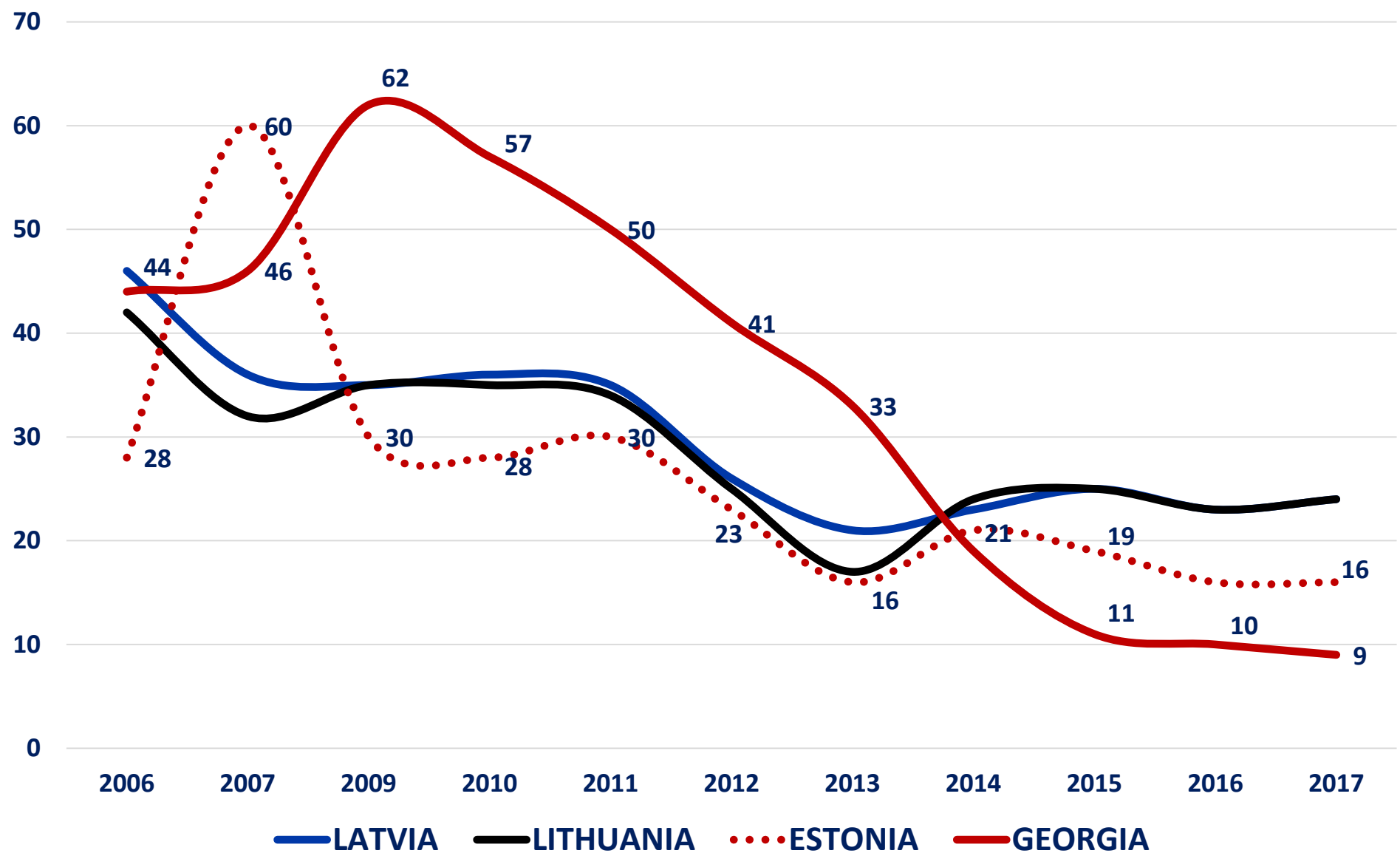




HOSTILE COUNTRIES

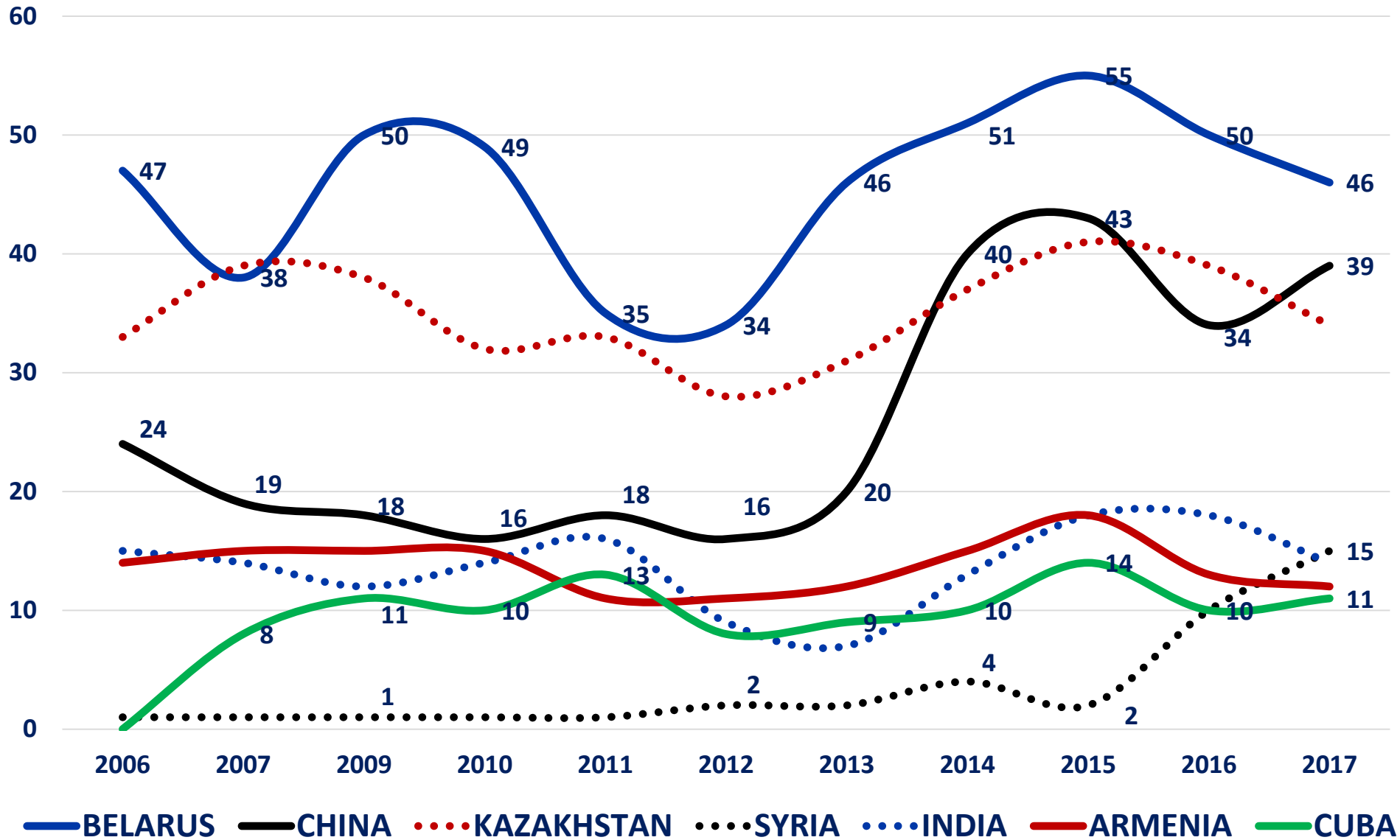


HOSTILE COUNTRIES





RUSSIA'S FRIENDS





ЛЕВАДА-ЦЕНТР

АНАЛИТИЧЕСКИЙ ЦЕНТР ЮРИЯ ЛЕВАДЫ

THANK YOU!
VISIT WWW.LEVADA.RU